

ASI # 74710
PPAI # 112597
SAGE # 66640



NUMO™

www.numomfg.com

50 YEARS 1962-2012



2012

50 YEARS
1962-2012

Contents

	New Products	3
Articles	Web Site Features	4
	Function.Form	5
	Four-Color Process	6-7
	EcoCoolie 2.0™	8
	Custom Cut & Sew	9
	Scuba Foam vs. Neoprene	21
	Drinkware Printing	46
Insulators	Can Insulators	10-13
	Camo Insulators	14-15
	Bottle Insulators	16-20
	Neoprene Insulators	22-25
	Cooler Bags	26-28
Life & Leisure	Eyewear Accessories	29
	Key Holders	30
	Bottle Openers	30
	Rapster™ Handle Gripper	31
	Wrist Bands	31
	Mousepads	32
Tech Accessories	Phone Holders	33
	Cable Organizer	33
	iPad Stand	34
	Earbuds Holder	35
	Camera Cover	36
	iPad & Kindle Sleeves	37
	Laptop Sleeves	38-39
Bags	Zippered Bags	40-43
	Coin Bags	44
	Locking Bank Bags	45
Drinkware	4CP Sublimation Mugs	47
	Magic Mugs	48-49
	Standard Ceramic Mugs	50
	Specialty Ceramic Mugs	51-53
	Travel Mugs & Tumblers	54-55
	Aluminum Bottles	56
	Stainless Steel Bottles	57
	Glass Jars	58
	Glass Drinkware	58-59
	Shot Glasses & Shooters	60-61
Ink & Material Color Charts	62-65	
Ordering Info	66-67	

Welcome to our 2012 Promotional Products Catalog!

As we celebrate 50 years of manufacturing products for advertising, you can imagine our excitement in reaching this milestone.

What's especially exciting, though, is the fact that we've recently been able to develop more new items of our own design. You can see the fruit of these efforts on the opposite page.

In 2011, we held a contest asking our distributors to submit stories of some of their most successful projects. We've included several of these "Case Studies" adjacent to the respective items throughout this catalog. We'd like to take this opportunity to thank those who have shared their ideas with us.

Here's to another great year, and we look forward to working with you!

Charlie Meyer
President
Kolder, Inc. (Parent Company of Numo)



Find us on Facebook!

www.facebook.com/numopromo



Visit the Numo Blog!

numopromo.wordpress.com



Follow us on Twitter!

www.twitter.com/numocreative



Connect with us on Google+!

plus.google.com/112882413426509410010



NEW ITEMS

Cyklone™ Neoprene
Bottle Insulator
Page 24



Flying-V
Aluminum iPad Stand
Page 34



BudBear™
Aluminum
Earbuds Holder
Page 35



*More new products
throughout the year!*

www.numomfg.com/new.html

BroadBand™
Neoprene Wrist Band
Page 31



Neoprene Laptop Sleeves
New Styles
Page 38



Fokus™ Neoprene
DSLR Camera Cover
Page 36



The Klutch™
Neoprene Lunch Bag
Page 28



U-Bag™
Neoprene Utility Bag
Page 40



Bottle Suit™ With Detachable
Aluminum Bottle Opener
Page 25



Aluminum Bottle Opener
Page 30



Neoprene Kindle Sleeve
Page 37



Zippered
Bottle Coolie™
With Detachable
Bottle Opener
Page 19



Neoprene iPad Sleeve
Page 37



WEBSITE FEATURES



We debuted a new website in January 2011, and we've been improving it ever since. We want our website to be the first place you think to visit when you have a question about our line. We're committed to providing information to help you sell our products, place orders, or just learn a bit more about our company.

To that end, some of the new features that we've introduced in the last year include:

- **Videos!** We've added short videos to product pages to show items actually being used. Furthermore, they are all hosted on a blind YouTube account so that you can link to them or forward them to your customers without having to share Numo branding.
- **Shipping Estimates!** You can now get shipping quotes from our website without having to call customer service and request one. Simply click on the "Get Shipping Estimate" button on a product page.
- **Live Chat!** While visiting our website, simply click on the "Chat Now" icon to be connected with a real, live person in our customer service department. No chatbots! We've found that quite a few folks have taken advantage of Live Chat. Several customers have made it their default mode of contact with us. Through chat, we're able to see where you are on our site, and send links to other pages that might be helpful. Chat is very interactive.

Additionally, check us out on Facebook, Twitter, and Google+ to learn more about who we are. We have loyal followers in social media who are frequently given advance notice of product giveaways and specials. Visit numomfg.com and click on the links in the top banner to find us.

Going forward in 2012, we hope to continue to improve numomfg.com. We hope to be able to offer more functionality to help make your Numo experience better!

FUNCTIONform

Between Numo and our parent, Kolder, we have been responsible for the development of many, if not most, of the innovative beverage insulators on the market today.

- **1982** – Kolder Holder – 5mm neoprene can holder with a glued in bottom.
- **1983** – Bottle Suit – the first insulator made specifically for a long neck bottle.
- **1998** – Pocket Coolie – the first polyurethane can holder to fold flat.
- **2001** – Bottle Jersey – the first sewn insulator to fit over bottles to look like a shirt or athletic jersey
- **2003** – Magnetic Kolder Kaddy – the first insulator to incorporate magnets into it in order to facilitate easy stowage with or without a full beverage.
- **2006** – Two tone insulators – the first insulators to use different fabrics to achieve multi-color looks without multi-color imprints.

One common thread running throughout our product development has been the age old axiom of “Form follows function.” It may be cliché, but that guides in all of our product development. Each of the innovations listed above was first and foremost a better mousetrap. They were not always a cheaper mousetrap, but they were always a better one due to their inherent improved functionality.

So throughout the catalog, you may notice a “**FUNCTION.form**” logo on certain products. Those are items that we’ve developed ourselves. Get it? Form follows function... **FUNCTION.form**.

We’ve recently been developing new items that are not necessarily related to beverage insulators. We’ve been particularly focusing on computer and technology-related items. We’re very excited about our new BudBear™ (page 34) and Flying V tablet stands (page 35).



FOUR-COLOR PROCESS

Most full-color magazines, catalogs, brochures, and retail packaging use some form of four-color process (a.k.a. "4CP" or "CMYK") to be able to render photos, illustrations, and graphics that use shading or gradients. Any of this kind of imagery can be applied to certain Numo items for a surprisingly reasonable cost.

The Process

Four-Color Process gets its name from the fact that four colors are used to create a very large gamut of color. The four colors are Cyan (a bright aqua blue), Magenta, Yellow, and Black, hence the "CMYK" you see used as another term for Four-Color Process. (The "K" stands for Black because Blue had already staked its claim on the letter "B".)

By printing various amounts of each of these inks on top of one another, other colors can be shown. For instance, printing some Yellow and Cyan in the same spot will render a green color. Add some Black to it and the green gets darker.

The printing process determines how much of each of these colors to be applied to the paper (or whatever material you're printing on).

Sublimation

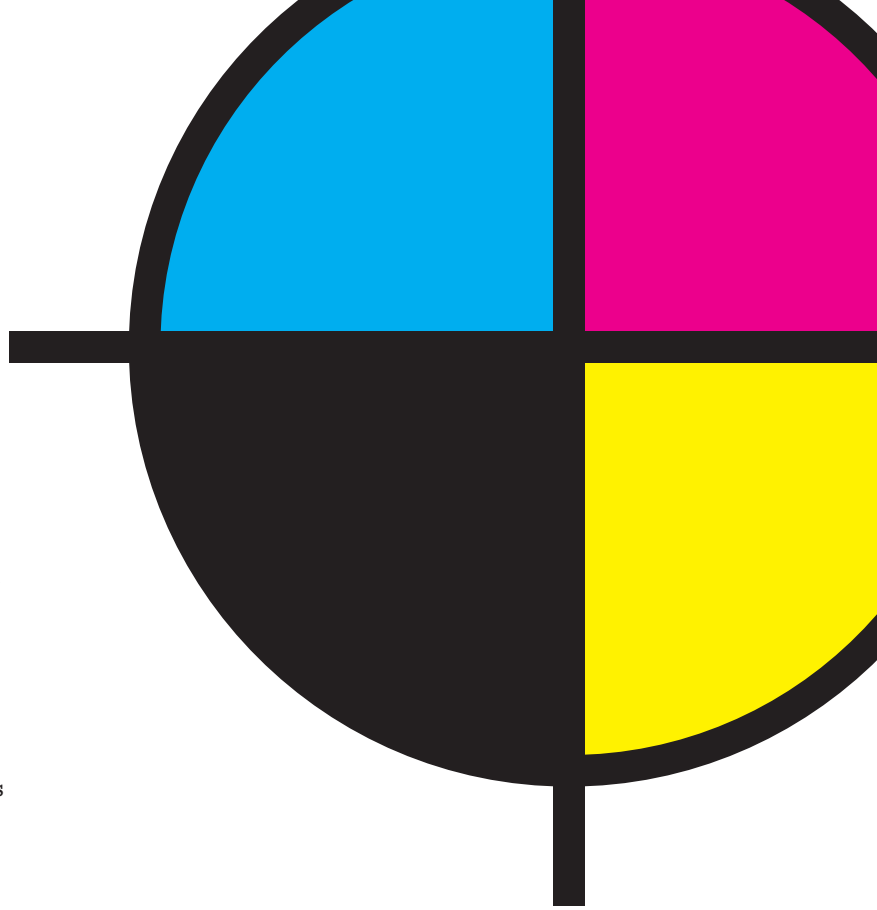
For most of our 4CP printing, Numo uses sublimation. Without getting into too much science, what happens is a mirror image of your imprint gets printed onto paper, then the paper is placed tightly against the product receiving the imprint. Adding some heat allows the printed image to transfer from the paper to the item.

The paper with the mirror image is called a transfer, and it can be printed on specially modified inkjet printers or on commercial printing presses.

One thing to note is that sublimation ink is transparent (It's technically a dye, rather than ink.), so it needs to have a white surface in order to show up properly. If you want a purple background behind your logo, that purple gets printed along with the imprint itself rather than depending on the material color behind it.



OR



What 4CP Is Good For

4CP really shines when you're using photographs or more complicated art:

Photos. The most obvious use would be a photo of a product, but also consider photos of facilities (past, present, or future) or of key players. (Real estate agents or political candidates are a natural fit here.)

Art. A painting or illustration, or a nice background texture can enhance many brands.

Complicated brand images. Many modern brands have logos that depend on things like 3-D shading or shadows and highlights. Much of this would be tough to reproduce in traditional screen printing, but it works *beautifully* in 4CP.

Things to Avoid When Using 4CP

Of course, there are some trade-offs when dealing with 4CP sublimation.

- **Large areas of flat color** (like in the background) can look uneven in some cases. Adding some texture pattern to these areas will hide the subtle irregularities. *Grays* and *earth tones* can be particularly hard to keep consistent in large areas.
- **White backgrounds** on some fabrics can look a bit *dingy* in some cases. On can or bottle insulators, we recommend using white as only an accent color in the design.
- **Some colors cannot be reproduced** by 4CP. Of particular note are some bright oranges that don't come out quite as intense, and royal or navy blues can tend to shift a little towards purple.

4CP Artwork Setup

4CP sublimation doesn't require vector art quite like some screen printing does, but it's still very helpful. It is necessary, however, to have high-resolution art. This means at least 300dpi at the final printed size. High-res photos or illustrations can make for relatively large file sizes, so please make sure you consider that before emailing. Files up to about 50MB can be uploaded via the Numo website. (Look for the "Upload Artwork" link on nearly every item page on our site.) For files larger than 50MB, we recommend using one of the free file sending service websites available.

Your art can be set up in RGB or CMYK color mode. If there are any PMS colors you wish us to try to match, please check with us before placing your order. Be aware that many PMS colors cannot be matched with perfect accuracy using 4CP printing.

We strongly recommend sending your art as a layered PSD (Photoshop-native) file.



Exclusively from Numo!

80%
POST-CONSUMER

Made from Recycled
Plastic (P.E.T.) Bottles



Available in
11 Colors

• Available in
Four-Color Process!

• Nearly all of our Scuba
Foam items can be built with
EcoCoolie™ 2.0 Foam!

• Look for this icon throughout
this catalog, or contact the
factory! ♻️



Get to know Numo... Custom Cut & Sew:

WE CUT. WE SEW.

Since Numo has a manufacturing presence in North America, we can easily cut and sew custom items for you. Quick prototypes + quick order turnarounds + our US-based product development group equate to a streamlined process. We can offer suggestions for keeping the cost down, along with design tweaks to improve overall utility.

We frequently produce custom items to fit specific beverage containers or digital devices. Our Action Coolie™ line has also inspired many of our customers to come up with custom-shaped Coolies, making the edges of the coolie fit the contours of a logo or image.

Contact the factory and let us talk you through the process. A custom item requires more effort, but with a greater reward. Seeing your design produced as an order creates a unique branding opportunity!



Rolls of Scuba Foam ready to be die-cut.



Our Die-Cutters use affordable Custom Dies for efficient short-run or long-run production.



Our sewing lines can handle as much as 80,000 Coolies per day!

CASE STUDY:

ITEM: Custom Diving Mask Pad

TYPE OF BUSINESS: Large Archaeology Network

THE PROMOTION: Skin divers' face masks were pulling hair on the back of head out because of rubber strap on back of mask. Hair would get tangled in strap. Custom neoprene mask wraps were needed. These are two pieces of neoprene that were sewn together and hemmed on edges leaving slits on both ends so mask strap could be put through. That way the strap did not come in contact with hair on the back of head.

RESULTS: No more hair getting tangled up in mask strap. Very happy client! Especially the women. Huge imprint area to promote their logo and web site! [The client] was so pleased with the results I have also taken orders for thousands of Kolder Kaddies and Peeper Keepers. So I'm very pleased too! All the products were very high quality. The imprints were perfect.

WHAT MADE IT SUCCESSFUL? I called Numo with the challenge and worked closely with [...] the plant manager to come up with a design that was cost effective and worked. The whole team at Numo are very responsive and proactive! They are solution driven and think out of the box. Great products and A+ service.

—Jeff M.





The Original Pocket Coolie®

½" High-Density Open-Cell Scuba Foam

Fits most cans & bottles.

FREE Second Side & Bottom Imprint!

		150	250	500	1000
	9100 #100	\$1.15	\$1.00	\$0.92	\$0.69
	9100 #100-4CP	\$1.97	\$1.71	\$1.55	\$1.32
	9100 #100ECO	\$1.39	\$1.13	\$1.03	\$0.93
	9100 #100ECO-4CP	\$2.29	\$2.03	\$1.87	\$1.65 (4c)

Imprint Area: 3.5" W x 3.5" H (Front & Back);
1.625" Diameter (Bottom) + bleed on 4CP items

Case Pack / Dimensions / Weight: 250 ct./15" x 15" x 10"/6 lbs.

Item Dimensions: 3 5/8" W x 5" H

Prices include a one-color imprint on one or two sides and bottom. Additional imprint colors: add \$0.30 (g) each. Screen charge \$45.00 (g) per color. For puff ink, please specify when ordering. Add \$0.10 (a) for generic camo material.

-4CP Prices include a four-color process sublimation imprint. Setup \$45.00 (g).



MAILABLE!

CASE STUDY:

ITEM: #100 Pocket Coolie

TYPE OF BUSINESS: Locally-Owned Outdoor Graphics & Sign Company

THE PROMOTION: We were looking to help out a local business during the current recession. We put together a contest to win a FREE vehicle wrap. The local newspaper was uninterested in advertising for us, as was all but one local radio station. We turned to the promotional products industry and our own website to help us promote the contest. We printed up coolies and tee shirts. We took contest entries on our website. We also had a BIG PARTY to announce our winner over the 1 sports radio station that helped us. It was a lot of work, but a lot of FUN. It was so fulfilling for us to be able to give away a vehicle wrap to a company that was in the most need of advertising help. We wore our shirts, used and gave away your coolies. People just loved them! All the coolies we ordered went out the door that afternoon.

RESULTS: Some of the people that had come or helped us with the party decided to order ASI products from us after seeing the coolies' appeal.

WHAT MADE IT SUCCESSFUL? I hear [...] time and time again telling clients that everyone loves coolies and no one ever throws them away. A very true statement in our experience! They are one of the smartest ways to get your name out there!

—Lisa S.



Scuba Holder™

⅜" Economy Open-Cell Scuba Foam • Fits most cans & bottles.
One-Color, One-Side Imprint Only.

		250	500	1000	
--	--	-----	-----	------	--

5 0296	#SH-1	\$0.60	\$0.57	\$0.56	(3c)
-----------	-------	--------	--------	--------	------

Imprint Area: 3" W x 3" H

Case Pack / Dimensions / Weight: 250 ct./15" x 15" x 10"/6 lbs.

Item Dimensions: 4" W x 5 ¼" H

Prices include a one-color imprint on one side. Screen charge \$45.00 (g). For puff ink, please specify when ordering.



#SH-1

Get to know Numo...

Can Insulators: What's The Difference?

Item #	Name (page)	Thickness	Four-Color Process Available	2nd Side Imprint	Bottom Imprint	Max # of Imprint Colors per item	EcoFoam2.0™ Available
100	Pocket Coolie™ (10)	1/8" High-Density	Yes	Included	Included	6	Yes
109	Pocket Hugger™ (11)	1/4"	No	Included	Included	6	No
SH-1	Scuba Holder™ (11)	1/8"	No	No	No	1	No

Pocket Hugger™

Extra-Thick ¼" Open-Cell Scuba Foam • Fits most cans & bottles.
FREE Second Side & Bottom Imprint!

		150	300	600	1200	
--	--	-----	-----	-----	------	--

5 9109	#109	\$1.40	\$1.22	\$1.02	\$0.91	(4c)
-----------	------	--------	--------	--------	--------	------

Imprint Area: 3.5" W x 3.5" H (Front & Back);
1.625" Diameter (Bottom)

Case Pack / Dimensions / Weight: 200 ct./15" x 15" x 10"/6 lbs.

Item Dimensions: 3 ⅝" W x 5" H

Prices include a one-color imprint on one or two sides and bottom. Additional imprint colors: add \$0.30 (g) each. Screen charge \$45.00 (g) per color. For puff ink, please specify when ordering.



#109

Indestructo™

Closed-Cell PVC Foam • Fits most cans & bottles.
One-Color Imprint Only

		210	525	1050	
--	--	-----	-----	------	--

5 9110	#110	\$1.04	\$0.97	\$0.92	(3c)
-----------	------	--------	--------	--------	------

Imprint Area: 3" W (9" Wrap) x 3" H

Case Pack / Dimensions / Weight: 105 ct./23" x 16" x 12"/11 lbs.

Item Dimensions: 3 ½" Diameter x 4" H

Prices include a one-color imprint on one or two sides or wrap. Screen charge \$45.00 (g).

Indestructo™ Material Colors

Navy	Kelly Green
Black	Purple
Forest Green	Orange
Gray	Royal Blue
Red	Burgundy
Lime Green	Turquoise
Pastel Pink	Bright Yellow



#110

Two-Tone Pocket Coolie™ Patent Pending

1/8" High-Density Open-Cell Scuba Foam
Contrasting Accent Panel on one Side
Fits most cans & bottles.

		150	250	500	1000
0477	#105	\$1.38	\$1.31	\$1.13	\$1.03
0477	#105-PSD (Stock Four-Color Process Pattern on Accent Panel)	\$1.72	\$1.55	\$1.41	\$1.24 (4c)

Imprint Areas: 2" W x 3.5" H (Front & Back);
1" W x 3.5" H (Accent Panel); 1.625" Diameter (Bottom)

Case Pack / Dimensions / Weight: 250 ct./15" x 15" x 10"/6 lbs.

Item Dimensions: 3 5/8" W x 5" H

Prices include a one-color imprint on one or two sides plus bottom (optional). Additional imprint colors: add \$0.30 (g) each. Screen charge \$45.00 (g) per color. Add \$0.30 (g) per color to imprint on Accent Panel (Additional screen charge required.) For puff ink, please specify when ordering. Add \$0.10 (a) for generic camo material.

"Patent Pending" will be added to the bottom imprint.



#105



#105

*Four Imprint Areas
Included!*



#10053PCS



#10054PCS

Action Coolie™ Patented

1/8" High-Density Open-Cell Scuba Foam
Fits most cans & bottles.

		150	250	500	1000
910053	#10053PCS Round	\$2.57	\$2.24	\$1.89	\$1.72
910054	#10054PCS Football Shape	\$2.57	\$2.24	\$1.89	\$1.72 (4c)

Imprint Area: 3.5" W x 3.375" H

Case Pack / Dimensions / Weight: 250 ct./15" x 15" x 10"/6 lbs.

Item Dimensions:

#10053PCS: 4" W x 5 1/4" H

#10054PCS: 4" W x 6" H

Prices include a four-color process sublimation imprint. Setup \$45.00 (g).



*Many
Stock Designs
Available!*

#10053PCS

Shape Coolies

1/8" High-Density Open-Cell Scuba Foam

Fits most cans & bottles.

FREE Second Side & Bottom Imprint!

		150	250	500	1000	
5 DAY	910044	#10044PCS Shamrock	\$1.50	\$1.30	\$1.22	\$1.12
5 DAY	910045	#10045PCS Heart	\$1.50	\$1.30	\$1.22	\$1.12
5 DAY	910050	#10050PCS House	\$1.50	\$1.30	\$1.22	\$1.12 (4c)

Imprint Area: Approx. 3.5" x 3.5" (Front & Back);
1.625" Diameter (Bottom)

Case Pack / Dimensions / Weight: 250 ct./15" x 15" x 10"/6 lbs.

Item Dimensions (Flat):

#10044PCS: 4" W x 5 1/2" H

#10045PCS: 4" W x 5 1/4" H

#10050PCS: 4" W x 5 1/8" H

Prices include a one-color imprint on one or two sides and bottom. Additional imprint colors: add \$0.30 (g) each. Screen charge \$45.00 (g) per color. For puff ink, please specify when ordering. Add \$0.20 (a) for generic camo material.



#10044PCS

#10045PCS



#10050PCS

Fish Coolies™ Patented

1/8" High-Density Open-Cell Scuba Foam

Fits most cans & bottles.

		150	250	500	1000	
	9100PCS	#100PCS Bass	\$2.72	\$2.36	\$2.01	\$1.84
	9100PCS-03	#10003PCS Trout	\$2.72	\$2.36	\$2.01	\$1.84 (4c)

Imprint Area: 3.5" x 3.5" (Front & Back)

Case Pack / Dimensions / Weight: 250 ct./15" x 15" x 10"/6 lbs.

Item Dimensions (Flat): 4" W x 5 1/4" H

Prices include a four-color process sublimation imprint. Setup \$45.00 (g).



#10003PCS

#100PCS



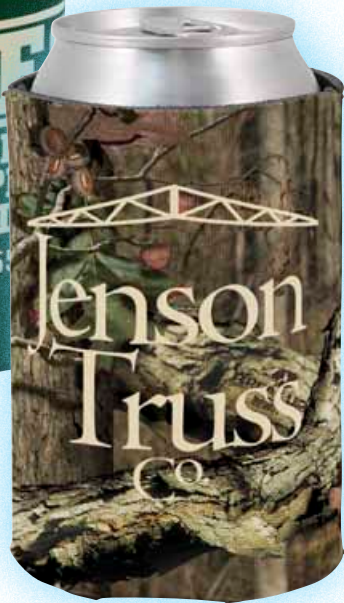
Insulators on these pages fold flat to fit anywhere!

MAILABLE!

CAMO



#105-TC



#100-TC

Camo Coolies™

1/8" High-Density Open-Cell Scuba Foam
Collapsible • Fits most cans & bottles.

		150	250	500	1000
9100	#100-TC Premium Licensed Camo	\$2.11	\$1.84	\$1.72	\$1.58
9100	#100-4CP Standard Camo Patterns	\$1.97	\$1.71	\$1.55	\$1.32
0477	#105-TC Premium Licensed Camo Accent Panel	\$1.86	\$1.66	\$1.51	\$1.34 (4c)

Imprint Areas:

#100-TC: 3.5" W x 3.5" H (Front & Back); 1.625" Diameter (Bottom)
#100-4CP: 3.5" W x 3.5" H (Front & Back); 1.625" Diameter (Bottom)
#105-TC: 2" W x 3.5" H (Front & Back);
1" W x 3.5" H (Accent Panel); 1.625" Diameter (Bottom)

Case Pack / Dimensions / Weight: 250 ct./15" x 15" x 10"/6 lbs.

Item Dimensions: 3 5/8" W x 5" H

Prices include a one-color imprint on one or two sides and bottom. Additional imprint colors: add \$0.30 (g) each. Screen charge \$45.00 (g) per color. For puff ink, please specify when ordering. Add \$0.10 (a) for generic camo material.

-4CP Prices include a four-color process sublimation imprint. Setup \$45.00 (g).

#115-TC



#115-4CP



Camo Zippered Bottle Coolie™

1/8" High-Density Open-Cell Scuba Foam with Zipper
Collapsible • Fits longneck glass bottles.

		150	250	500	1000
9115	#115-TC Premium Licensed Camo	\$3.58	\$3.11	\$2.90	\$2.69
9115	#115-4CP Standard Camo Patterns	\$4.31	\$3.75	\$3.25	\$2.99 (4c)

Imprint Areas: 3.66" W x 1.76" H (Zipper Side); 3.66" W x 3.78" H (Back Side); 1.625" Diameter (Bottom)

Case Pack / Dimensions / Weight: 150 ct./15" x 15" x 10"/7 lbs.

Item Dimensions: 3 3/4" W x 8" H (Flat)

Prices include a one-color imprint on one or two sides and bottom. Additional imprint colors: add \$0.30 (g) each. Screen charge \$45.00 (g) per color. For puff ink, please specify when ordering. Add \$0.36 (a) for generic camo material.

-4CP Prices include a four-color process sublimation imprint. Setup \$45.00 (g).

More camo items on our website!

PREMIUM LICENSED CAMO PATTERNS



Realtree® Hardwoods Green HD®



Advantage® Max-4 HD®



Mossy Oak® Break-Up Infinity®



Mossy Oak® Duck Blind®

STANDARD CAMO PATTERNS

(Pay only the regular Four-Color Process Price & Setups.)



Bonz™ Camo



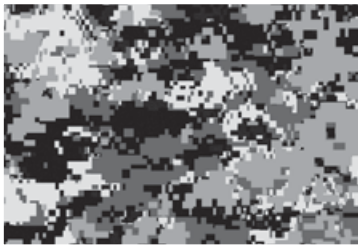
Next G-1 Vista™ Camo



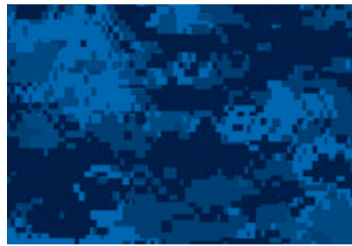
DigiColor Camo - Military Olive



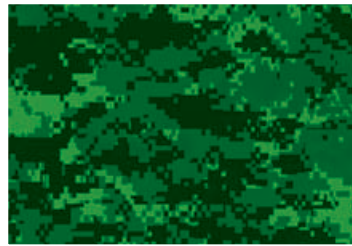
DigiColor Camo - Desert Tan



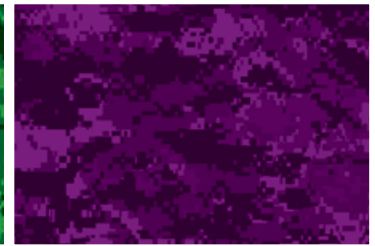
DigiColor Camo - Gray



DigiColor Camo - Dark Blue



DigiColor Camo - Dark Green



DigiColor Camo - Dark Purple



DigiColor Camo - Light Blue



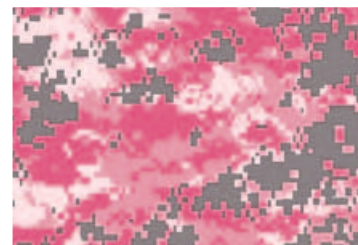
DigiColor Camo - Light Purple



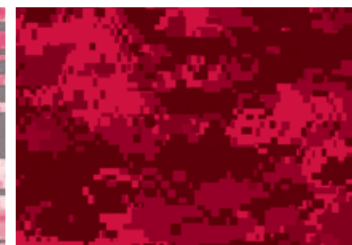
DigiColor Camo - Lime Green



DigiColor Camo - Orange



DigiColor Camo - Pink & Gray



DigiColor Camo - Red





#102

#102

#102-4CP

Bottle Jersey™ Patented

1/8" High-Density Open-Cell Scuba Foam

Collapsible • Fits longneck bottles and some plastic water bottles.

		150	250	500	1000	
5 DAY	9102	#102	\$1.86	\$1.62	\$1.46	\$1.34
	9102	#102-4CP Four-Color Process	\$3.26	\$2.83	\$2.58	\$2.42
	9102	#102ECO EcoCoolie 2.0™ Material	\$2.25	\$1.98	\$1.84	\$1.72
	9102	#102ECO-4CP EcoCoolie 2.0™ Material Four-Color Process	\$3.69	\$3.42	\$3.00	\$2.83
5 DAY	9103	#103 Sleeveless	\$1.93	\$1.69	\$1.51	\$1.44 (4c)

Imprint Area: 3.25" W x 4.5" H (Front & Back)

Case Pack / Dimensions / Weight: 200 ct./15" x 15" x 10"/6 lbs.

Item Dimensions: 5 1/2" W x 6" H (Flat)

Prices include a one-color imprint on one or two sides. Additional imprint colors: add \$0.30 (g) each. Screen charge \$45.00 (g) per color. For puff ink, please specify when ordering. Add \$0.20 (a) for generic camo material.

-4CP Prices include a four-color process sublimation imprint. Setup \$45.00 (g). Item proof \$45.00 (g) + piece price + shipping.

FUNCTIONform
NUMO ORIGINAL



#106-4CP

#106

#107

Can Jersey™ Patented

1/8" High-Density Open-Cell Scuba Foam

Collapsible • Fits longneck glass bottles and 12 oz. aluminum cans.

		150	250	500	1000	
5 DAY	9106	#106	\$1.73	\$1.51	\$1.32	\$1.28
	9106	#106-4CP Four-Color Process	\$3.09	\$2.68	\$2.08	\$1.54
5 DAY	9107	#107 Sleeveless	\$1.74	\$1.51	\$1.32	\$1.28 (4c)

Imprint Area: 3.375" W x 3.5" H (Front & Back)

Case Pack / Dimensions / Weight: 200 ct./15" x 15" x 10"/6 lbs.

Item Dimensions: 5 1/2" W x 6" H (Flat)

Prices include a one-color imprint on one or two sides. Additional imprint colors: add \$0.30 (g) each. Screen charge \$45.00 (g) per color. For puff ink, please specify when ordering. Add \$0.20 (a) for generic camo material.

-4CP Prices include a four-color process sublimation imprint. Setup \$45.00 (g). Item proof \$45.00 (g) + piece price + shipping.

Boot Coolie™ Patented

1/8" High-Density Open-Cell Scuba Foam

Collapsible • Fits glass longnecks & most plastic water bottles.

		150	250	500	1000	
5 DAY	91.35	#135	\$2.05	\$1.79	\$1.64	\$1.51
	91.35	#135-4CP	\$3.39	\$2.94	\$2.60	\$1.96 (4c)

Imprint Area: 2.75" W x 2" H (Front & Back)

Case Pack / Dimensions / Weight: 200 ct./15" x 15" x 10"/6 lbs.

Item Dimensions: 5 3/4" W x 5" H (Flat)

Prices include a one-color imprint on one or two sides. Additional imprint colors: add \$0.30 (g) each. Screen charge \$45.00 (g) per color. For puff ink, please specify when ordering. Add \$0.20 (a) for generic camo material.

4CP Prices include a four-color process sublimation imprint. Setup \$45.00 (g). Item proof \$45.00 (g) + piece price + shipping.



#559

*Sneaker Coolie™ Version
Available at the Same Price!*



#558



#135

#135-4CP

FUNCTIONform
NUMO ORIGINAL

CASE STUDY:

ITEM: #135-4CP Four-Color Process Boot Coolie

TYPE OF BUSINESS: A Ranch Where Community Events Are Held

THE PROMOTION: Client is a generous philanthropist who owns a ranch/saloon where community events are held to benefit many organizations and charities. He had an event for the county sheriffs' association and wanted to give a gift with both his logo and the sheriffs logo in a western theme. With fantastic artwork we were able to customize each logo in full color on both locations and tie into the western and saloon theme. This promotion was a huge success and has generated a new order for an FBI event being held at the client's property. Numo's products are useful, have a high perceived value and are a low price. They are "one of kind". Thanks to the art capabilities, these Boot Coolies have become collectables which have a high return on investment for the client.

RESULTS: Re-Orders; Talk of the town gifts; Happy customer

WHAT MADE IT SUCCESSFUL? The artwork and full-color decoration.

—Hilary A.





#115

#115-ECO-4CP

Zippered Bottle Coolie™

1/8" High-Density Open-Cell Scuba Foam
Collapsible • Fits longneck glass bottles.

		150	250	500	1000	
5 DAY	9115	#115	\$2.78	\$2.42	\$2.13	\$1.79
	9115	#115-4CP Four-Color Process	\$4.31	\$3.75	\$3.25	\$2.99
	9115	#115ECO EcoCoolie 2.0™ Foam	\$3.21	\$2.83	\$2.53	\$2.17
	9115	#115ECO-4CP EcoCoolie 2.0™ Foam Four-Color Process	\$4.77	\$4.15	\$3.84	\$3.63 (4c)

Imprint Area: 3.66" W x 1.76" H (Zipper Side); 3.66" W x 3.78" H (Back Side); 1.625" Diameter (Bottom)

Case Pack / Dimensions / Weight: 150 ct./15" x 15" x 10"/7 lbs.

Item Dimensions: 3 3/4" W x 8" H (Flat)

Prices include a one-color imprint on one or two sides and bottom. Additional imprint colors: add \$0.30 (g) each. Screen charge \$45.00 (g) per color. For puff ink, please specify when ordering. Add \$0.36 (a) for generic camo material.

-4CP Prices include a four-color process sublimation imprint. Setup \$45.00 (g). Item proof \$45.00 (g) + piece price + shipping.



#101

#101-4CP

Bottle Coolie™

1/8" High-Density Open-Cell Scuba Foam
Collapsible • Fits longneck glass bottles.

		150	250	500	1000	
5 DAY	101	#101	\$1.85	\$1.61	\$1.43	\$1.09
	101	#101-4CP Four-Color Process	\$2.43	\$2.16	\$2.00	\$1.61
	101	#101ECO EcoCoolie 2.0™ Foam	\$2.22	\$1.92	\$1.72	\$1.32
	101	#101ECO-4CP EcoCoolie 2.0™ Foam Four-Color Process	\$2.72	\$2.41	\$2.22	\$1.80 (4c)

Imprint Area: 3" W x 4.25" H (Front & Back)

Case Pack / Dimensions / Weight: 150 ct./15" x 15" x 10"/6 lbs.

Item Dimensions: 3 5/8" W x 7" H

Prices include a one-color imprint on one side. Additional imprint colors or locations add \$0.30 (g) per color per side. For camo material, add \$0.36 (a). Screen Charge \$45.00 (g) per color (per side if second side is different).

-4CP Prices include a four-color process sublimation imprint. Setup \$45.00 (g) per side if artwork is different on each side. Item proof \$45.00 (g) + piece price + shipping.

New! Zippered Bottle Coolie™ With Bottle Opener

½" High-Density Open-Cell Scuba Foam
With Detachable Aluminum Bottle Opener
Collapsible • Fits longneck glass bottles.

		150	250	500	1000
9116	#9116 Blank Bottle Opener	\$3.45	\$3.11	\$2.78	\$2.35
9116	#9116-4CP Four-Color Process Insulator; Blank Bottle Opener	\$4.47	\$4.08	\$3.57	\$3.07
9116	#9116-IBO Imprinted Bottle Opener	\$3.54	\$3.20	\$2.86	\$2.44
9116	#9116-IBO-4CP Four-Color Process Insulator; Imprinted Bottle Opener	\$4.65	\$4.27	\$3.75	\$3.25 (4c)

Imprint Areas: 3.66" W x 1.76" H (Zipper Side);
3.66" W x 3.78" H (Back Side); 1.625" Diameter (Bottom);
1.125" W x 0.25" H (Bottle Opener)

Case Pack / Dimensions / Weight: 150 ct./15" x 15" x 10"/8 lbs.

Item Dimensions: 3 ¾" W x 8" H (Flat)

Prices include a one-color imprint on one or two sides and bottom. Additional imprint colors: add \$0.30 (g) each. Screen charge \$45.00 (g) per color per location. For puff ink, please specify when ordering. Add \$0.36 (a) for generic camo material.

-IBO Prices include additional one-color imprint on Aluminum Bottle Opener. (Additional screen charge applies.)

-4CP Prices include a four-color process sublimation imprint. Setup \$45.00 (g). Item proof \$45.00 (g) + piece price + shipping.

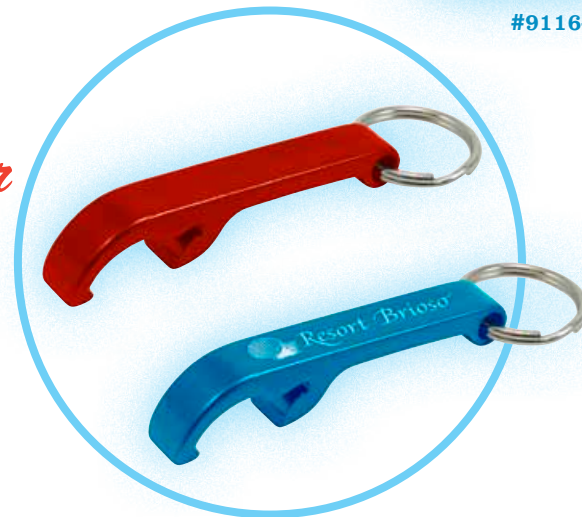


#9116-IBO

#9116-4CP

*Detachable Bottle Opener
available as blank
or imprinted.*

See p. 30 for standalone Bottle Opener.





#104

Scuba Bottle Bag™

½" High-Density Open-Cell Scuba Foam

Collapsible • Fits most 16-20 oz. Water or Soda Bottles.

		150	250	500	1000	
	9104	#104	\$3.49	\$3.04	\$2.34	\$2.07
	9104	#104-4CP	\$4.89	\$4.24	\$3.20	\$2.42
	9104	#104ECO	\$3.94	\$3.47	\$2.64	\$2.34
 	9104	#104ECO-4CP	\$5.29	\$4.59	\$3.47	\$2.62 (4c)

Imprint Area: 3.75" W x 5.25" H (Front & Back); 2" Diameter (Bottom)

Case Pack / Dimensions / Weight: 250 ct./22" x 16" x 13"/12 lbs.

Item Dimensions: 4 ⅝" W x 7 ⅞" H

Prices include a one-color imprint on one or two sides and bottom. Additional imprint colors: add \$0.30 (g) each. Screen charge \$45.00 (g) per color. For puff ink, please specify when ordering. Add \$0.36 (a) for generic camo material.

-4CP Prices include a four-color process sublimation imprint. Setup \$45.00 (g). Item proof \$45.00 (g) + piece price + shipping.



#122

Neoprene Bottle Bag™

Neoprene (Wetsuit Material)

Fits most 16-20 oz. Water or Soda Bottles.

		150	250	500	1000	
	9122	#122	\$3.18	\$2.80	\$2.43	\$2.05 (4c)

Imprint Area: 3" W x 4" H

Case Pack / Dimensions / Weight: 50 ct./15" x 15" x 10"/6 lbs.

Item Dimensions: 4" W x 6" H

Prices include a one-color imprint on one side only. Screen charge \$45.00 (g).

Get to know Numo...

Scuba Foam vs. Neoprene:

Scuba is one of the commonly-used names for the material that Numo makes Pocket Coolies out of. Scuba was developed as a cheaper alternative to neoprene for beverage insulators. The irony is that the actual suits worn by scuba divers are really neoprene.

Kolder, Inc. (NUMO's parent company) began making beverage insulators out of neoprene in 1982. In 1982, the primary beverage insulator was the old, fat, extruded insulator. Neoprene offered great insulation properties in addition to being compact and offering multi-color imprints. Neoprene was the Cadillac of beverage insulators, but discerning consumers were willing to pay the price for a superior product.

Scuba arrived on the scene in the late 1990's. The material itself is constructed of an "open cell" polyurethane foam with a polyester fabric on one side and a tricot on the other. Neoprene is a "closed cell" rubber-based product with a polyester or nylon fabric on both sides. Tricot doesn't stretch nearly as well as nylon and poly, but guess what, it's cheaper!

You might be asking yourself, what does he mean by "open cell" and "closed cell"? Well, take a look at this picture. You can see air "bubbles" in the foam of the scuba (on the left), whereas you can't see the bubbles in the neoprene (on the right). When we say "open cell", we actually mean that we can see the bubbles in the foam, while neoprene is "closed cell" because we can't. The bubbles in neoprene are still there, but they're just not visible ("closed-cell" is a bit of a misnomer).



Now for the science bit... heat is transferred in three ways: conduction (transfer through physical contact), convection (transfer through the movement of air), and radiation (complicated). The rate at which heat is transferred into your beverage is a function of all three, and when you put an insulator on it, you're slowing that transfer in all three ways. Any insulator inhibits air flow around the can or bottle, and therefore impedes convection. When you have a neoprene insulator on a can or bottle, heat has to be transferred through a much denser, less conductive, material than scuba. What happens on a small scale is that in scuba foam, the heat is able to transfer through a little bit of polyurethane, and a lot of air (bubbles). Since neoprene, which is mostly rubber, it's the better insulator!

You might have heard about the "R-value" of insulation. That is a measure of the rate at which heat is transferred through something. The higher the R-value the better your insulation in your attic and walls, right? Well, neoprene has a higher R-value than scuba.



#KK



#KK-4CP

The Original Kolder Kaddy™ A Kolder Line Item

High-Quality Neoprene (Wetsuit Material)
Fits most cans & bottles.

		50	100	250	500	1000	
5 DAY	0070	#KK	\$1.58	\$1.42	\$1.24	\$1.18	\$1.00
	0070	#KK-4CP	\$3.20	\$2.73	\$2.44	\$2.17	\$1.68 (5c)

Imprint Area: 3" W x 3" H Front & Back; 1.875" Diameter Bottom

Case Pack / Dimensions / Weight: 250 ct./15" x 15" x 10"/12 lbs.

Item Dimensions: 3 3/4" W x 5 1/8" H (Flat)

#KK Prices include a one-color imprint on one or two sides and bottom. Additional imprint colors: add \$0.30 (g) each. Screen charge \$45.00 (g) per color. For puff ink, please specify when ordering. Add \$0.20 (a) for generic camo material.

#KK-4CP Prices include a four-color process sublimation imprint. Setup \$45.00 (g). Item proof \$45.00 (g) + piece price + shipping.



This item is

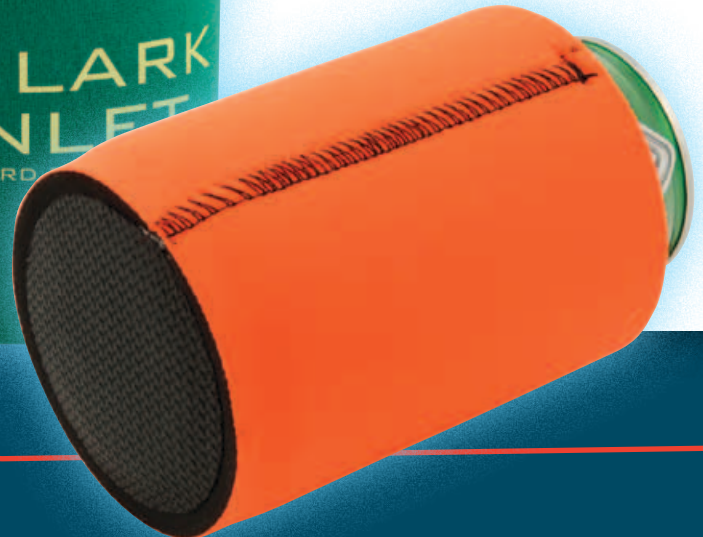
MAILABLE!



#KH-4CP



#KH



The Original Bottle Suit™

A Kolder Line Item

High-Quality Neoprene (Wetsuit Material)
Fits glass longneck bottles.

		50	100	250	500	1000	
0003	#BS	\$3.44	\$3.28	\$3.03	\$2.84	\$2.58	
0003	#BS-4CP	\$6.35	\$5.54	\$4.89	\$4.36	\$4.10	(5c)

Imprint Area: 3.25" W x 2.5" H (Zipper Side);
3.25" W x 4" H (Opposite Zipper)

Case Pack / Dimensions / Weight: 50 ct./15" x 15" x 10"/6 lbs.

Item Dimensions: 2 5/8" W x 7 5/8" H

#BS Prices include a one-color imprint in flat ink on one side. For puff ink, please specify when ordering. Additional imprint colors add \$0.30 (g) each. For second side imprint add \$0.30 (g) per color, per side. For camo material add \$0.36 (a). Screen Charge \$45.00 (g) per color per side.

#BS-4CP Prices include a four-color process sublimation imprint. Setup \$45.00 (g) per side if artwork is different on each side. Item proof \$45.00 (g) + piece price + shipping.



#BS-4CP

#BS

The Original Kolder Holder™

A Kolder Line Item

Extra-Thick High-Quality Neoprene (Wetsuit Material)
Fits most cans & bottles.

		50	100	250	500	1000	
0007	#KH	\$2.27	\$2.09	\$1.91	\$1.78	\$1.63	
0007	#KH-4CP	\$4.19	\$3.65	\$3.20	\$2.84	\$2.75	(5c)

Imprint Area: 3.5" W x 3.5" H One-Sided; 3" W x 3" H Front & Back

Case Pack / Dimensions / Weight: 50 ct./15" x 15" x 10"/5 lbs.

Item Dimensions: 2 7/8" Diameter x 4" H

#KH Prices include a one-color imprint on one or two sides or full-wrap. Additional imprint colors: add \$0.30 (g) each. Screen charge \$45.00 (g) per color. For puff ink, please specify when ordering. Add \$0.20 (a) for generic camo material.

#KH-4CP Prices include a four-color process sublimation imprint. Setup \$45.00 (g). Item proof \$45.00 (g) + piece price + shipping.

Kolder Holder™ Material Colors

Emerald Green	Magenta	Rose
Royal Blue	Maroon	Off-White
Dark Purple	Evergreen	Burnt Orange
Red	Fluorescent Pink	Pastel Pink
Brown	Beige	Black
Navy	Jungle Green	Blaze Orange
Yellow	Spring Camo	Fall Camo



#0703

New for 2012! Cyclone™

High-Quality Neoprene (Wetsuit Material) • Fits most longneck glass bottles.

FUNCTIONform
NUMO ORIGINAL

		50	100	250	500	1000	
0703	#0703	\$3.44	\$3.28	\$3.03	\$2.84	\$2.58	(5c)

Imprint Area: 2" x 4"

Case Pack / Dimensions / Weight: 50 ct./15" x 15" x 10"/6 lbs.

Item Dimensions: 2 5/8" W x 7 5/8" H

Prices include a one-color imprint in flat ink on one side. For puff ink, please specify when ordering. Additional imprint colors add \$0.30 (g) each. For second side imprint add \$0.30 (g) per color, per side. For camo material add \$0.36 (a). Screen Charge \$45.00 (g) per color per side.

4CP Prices include a four-color process sublimation imprint. Setup \$45.00 (g) per side if artwork is different on each side. Item proof \$45.00 (g) + piece price + shipping.

A new twist on our Bottle Suit!

New! Bottle Suit™ With Bottle Opener

High-Quality Neoprene (Wetsuit Material)
Detachable Aluminum Bottle Opener
Fits glass longneck bottles.

		50	100	250	500	1000
0004	#0004 Blank Bottle Opener	\$4.21	\$3.87	\$3.54	\$3.35	\$3.05
 0004	#0004-4CP Four-Color Process Insulator Blank Bottle Opener	\$7.08	\$6.25	\$5.58	\$5.25	\$4.83
0004	#0004-IBO Imprinted Bottle Opener	\$4.29	\$3.96	\$3.62	\$3.43	\$3.13
 0004	#0004-IBO-4CP Four-Color Process Insulator; Imprinted Bottle Opener	\$7.22	\$6.38	\$5.73	\$5.23	\$4.98 (5c)

Imprint Area: 3.25" W x 2.5" H (Zipper Side);
3.25" W x 4" H (Opposite Zipper);
1.125" W x 0.25" H (Bottle Opener)

Case Pack / Dimensions / Weight: 50 ct./15" x 15" x 10"/7 lbs.

Item Dimensions: 2 5/8" W x 7 5/8" H

Prices include a one-color imprint in flat ink on one side. For puff ink, please specify when ordering. Additional imprint colors add \$0.30 (g) each. For second side imprint add \$0.30 (g) per color, per side. For camo material add \$0.36 (a). Screen Charge \$45.00 (g) per color per side.

4CP Prices include a four-color process sublimation imprint. Setup \$45.00 (g) per side if artwork is different on each side. Item proof \$45.00 (g) + piece price + shipping.



#0004

#0004-IBO

*Detachable Bottle Opener
available as blank
or imprinted.*

See p. 30 for standalone Bottle Opener.



Flat Panels Can Be Shipped
for Embroidery Prior to Assembly.



#KKB2400



#KKB1800

*Extra-Thick Insulation
Holds Temperatures Longer!*

*Thicker Walls
Maintain Shape!*



#KKB1200



#KKB600

Premium Cooler Bag

Tough Duck Exterior • Extra-Thick Insulation
Heat-Sealed Liner • Zipper Closure

		12	48	96	144	288	
0079	#KKB600 6-Pack	\$35.05	\$32.98	\$31.15	\$29.51	\$28.04	
0079-CAMO	#KKB600C 6-Pack Camo	\$37.22	\$35.03	\$33.08	\$31.34	\$29.77	
0081	#KKB1200 12-Pack	\$37.80	\$35.57	\$33.60	\$31.83	\$30.24	
0081-CAMO	#KKB1200C 12-Pack Camo	\$40.43	\$38.05	\$35.94	\$34.05	\$32.35	
0082	#KKB1800 18-Pack	\$45.55	\$42.87	\$40.49	\$38.36	\$36.44	
0082-CAMO	#KKB1800C 18-Pack Camo	\$48.90	\$46.02	\$43.47	\$41.18	\$39.12	
0083	#KKB2400 24-Pack	\$51.28	\$48.26	\$45.58	\$43.18	\$41.02	
0083-CAMO	#KKB400C 24-Pack Camo	\$55.41	\$52.15	\$49.25	\$46.66	\$44.33	(5c)

Imprint Areas: **#KKB600:** 4" W x 4" H; **#KKB1200:** 5" W x 5" H; **#KKB1800:** 6" W x 6" H; **#KKB2400:** 6" W x 6" H

Case Pack / Dimensions / Weight:

#KKB600: 24 ct./30" x 20" x 25"/35lbs.; **#KKB1200:** 16 ct./30" x 20" x 25"/35 lbs.;

#KKB1800: 10 ct./18" x 18" x 14"/35 lbs.; **#KKB2400:** 9 ct. 18" x 18" x 14"/35 lbs.

Item Dimensions:

#KKB600: 11 3/4" W x 6 3/4" H x 4 1/8" D; **#KKB1200:** 14 3/4" W x 9 3/4" H x 6 5/8" D;

#KKB1800: 14 3/4" W x 10 3/4" H x 5 5/16" D; **#KKB2400:** 17 3/8" W x 11" H x 8 1/2" D

Prices include a one-color imprint on one side. Additional colors (up to 6 total) add \$0.60 (g) per color per side. Screen Charge \$45.00 (g) per color.

Premium Cooler Bag Material Colors



CASE STUDY:

ITEM: #KKB1800 Premium Cooler Bag

TYPE OF BUSINESS: Fire Protection and Suppression

THE PROMOTION: The client had used a soft sided cooler in the past and wanted some more. I suggested your cooler bags, but they were hesitant because of the possibility of leaking. I promised they would not leak and took it a step further. The next day, which was a Friday, I took them one of your coolers that I use as a self-promotion, filled with ice and beverages. I put it on my client's Italian leather couch, and I told him I would be back on Monday to pick it up. I asked him to not move it, that's how much I believed in this product.

RESULTS: On Monday morning, I was at my client's office to get the cooler, and took the order for 48 of the 18 pack coolers.

WHAT MADE IT SUCCESSFUL? This promotion was a success because of the workmanship and quality of the products Numo provides

—Tim B.





#0667-4CP

#0667

New! Klutch™ Neoprene Lunch Bag

High-Quality Neoprene (Wetsuit Material) • Zipper Closure

		24	48	96	144	288
0667	#0667	\$10.43	\$9.68	\$9.26	\$8.41	\$7.40
0667	#0667-4CP	\$12.29	\$11.44	\$10.94	\$9.93	\$9.09 (5c)

Standard Imprint Area: 4" W x 3.25" H

Maximum Imprint Area: 7" W x 4.25" H

Case Pack / Dimensions / Weight: 24 ct./15" x 15" x 10"/12 lbs.

Item Dimensions: 9 1/2" W x 9 1/2" H x 4 1/2" D

#0667 Prices include a one-color imprint in flat ink on one side. Additional imprint colors add \$0.30 (g) each. For second side imprint add \$0.30 (g) per color, per side. For camo material add \$1.60 (a). Screen Charge \$45.00 (g) per color per side.

#0667-4CP Prices include a four-color process sublimation imprint on one side. Setup \$45.00 (g). Item proof \$45.00 (g) + piece price + shipping.



Pocket Cooler™

12-Pack Sized Insulated Cooler Bag
Tough Duck Exterior with Front Pocket
Heat-Sealed Liner • Zipper Closure

Folds Flat!
Ships Flat!

		12	48	96	144	288
0311	#KKB12	\$16.83	\$14.58	\$13.57	\$12.34	\$11.48 (5c)

Imprint Area: 4" W x 4" H

Case Pack / Dimensions / Weight: 12 ct./18" x 18" x 14"/16 lbs.

Item Dimensions: 12" W x 9 1/2" H x 7" D

Prices include a one-color imprint on front pocket. Additional colors (up to 5 total) add \$0.60 (g) per color. Screen Charge \$45.00 (g) per color. Add \$1.20 (a) for generic camo material.

#KKB12



Pocket Cooler™ Material Colors

Navy	Black	Forest Green	Red
Maroon	Royal Blue	Purple	Camo

Scuba Eyeglass Case

1/8" High-Density Open-Cell Scuba Foam

		150	250	500	1000
9138	#9138 Straight Opening	\$2.05	\$1.33	\$1.16	\$0.99
9139	#9139 Curved Opening	\$2.05	\$1.33	\$1.16	\$0.99
9138	#9138-4CP Straight Opening Four-Color Process	\$2.66	\$1.99	\$1.80	\$1.60
9139	#9139-4CP Curved Opening Four-Color Process	\$2.66	\$1.99	\$1.80	\$1.60 (4c)

Imprint Area: 4.5" W x 2.5" H

Case Pack / Dimensions / Weight: 200 ct./15" x 15" x 10"/9 lbs.

Item Dimensions: 6 3/4" W x 3 1/2" H

Prices include a one-color imprint on one or two sides. Additional imprint colors: add \$0.30 (g) per color. Screen charge \$45.00 (g) per color. For puff ink, please specify when ordering. For second side imprint, add \$0.30 (g) per color. Add \$0.20 (a) for generic camo material.

-4CP Prices include a four-color process sublimation imprint. Setup \$45.00 (g).



#9138

#9138-4CP

#9139-4CP

Neoprene Eyeglass Case

High-Quality Neoprene (Wetsuit Material)

		50	100	250	500	1000
0045	#EC	\$5.09	\$4.63	\$4.43	\$4.18	\$4.02
0045	#EC-4CP	\$7.66	\$6.68	\$5.95	\$5.41	\$4.92 (5c)

Imprint Area: 5" W x 1.75" H

Case Pack / Dimensions / Weight: 100 ct./15" x 15" x 10"/10 lbs.

Item Dimensions: 6 3/4" W x 3 1/4" H

#EC Prices include a one-color imprint on one side. Additional imprint colors add \$0.30 (g) each. For second side imprint add \$0.30 (g) per color. For camo material add \$0.20 (a). Screen Charge \$45.00 (g) per color per side.

#EC-4CP Prices include a four-color process sublimation imprint. Setup \$45.00 (g). Item proof \$45.00 (g) + piece price + shipping.



#EC-4CP

#EC

Peeper Keeper™

High-Quality Neoprene (Wetsuit Material)

Fits many Eyeglasses, Safety Glasses, and Sunglasses.

		50	100	250	500	1000
0316	#PK	\$1.82	\$1.64	\$1.57	\$1.44	\$1.35 (5c)

Imprint Area: 10" W x 0.625" H

Case Pack / Dimensions / Weight: 250 ct./12" x 10" x 10"/5 lbs.

Item Dimensions: 17" L x 7/8" H

Prices include a one-color imprint on one side. Screen charge \$45.00 (g). For puff ink, please specify when ordering. Add \$0.10 (a) for generic camo material.



#PK



#0635

Wrist Strap Key Holder

High-Quality Neoprene (Wetsuit Material)

		150	250	500	1000	
0635	#0635	\$0.90	\$0.80	\$0.76	\$0.70	(4c)

Imprint Area: 3" x 0.625"

Case Pack / Dimensions / Weight: 550 ct./12" x 10" x 10"/15 lbs.

Item Dimensions: 7/8" W x 5" L

Prices include a one-color imprint on one or two sides. Additional imprint colors: add \$0.30 (g) each. Screen charge \$45.00 (g) per color. For puff ink, please specify when ordering. Add \$0.20 (a) for generic camo material.



#0636

Key Holder with Carabiner Clip

High-Quality Neoprene (Wetsuit Material)

		150	250	500	1000	
0636	#0636	\$1.40	\$1.20	\$1.10	\$1.00	(4c)

Imprint Area: 3" x 0.625"

Case Pack / Dimensions / Weight: 550 ct./15" x 15" x 10"/15 lbs.

Item Dimensions: 7/8" W x 7 1/8" L

Prices include a one-color imprint on one or two sides. Additional imprint colors: add \$0.30 (g) each. Screen charge \$45.00 (g) per color. For puff ink, please specify when ordering. Add \$0.20 (a) for generic camo material.

New! Aluminum Bottle Opener

Keyring included.



#9912

		150	250	500	1000	
9912	#9912	\$0.79	\$0.76	\$0.71	\$0.68	(4c)

Imprint Area: 1.25" x 0.25"

Case Pack / Dimensions / Weight: 150 ct./15" x 15" x 10"/7 lbs.

Item Dimensions: 55mm (~2 1/8") long

Prices include a one-color imprint in one location on bottle opener. Metallic imprint colors not available for this item. Additional imprint colors: add \$0.30 (g) per color. Screen charge \$45.00 (g) per color.

Rapster™ Handle Gripper

High-Quality Neoprene (Wetsuit Material)
Hook & Loop Closure

		250	500	1000	
0413	#RP	\$1.30	\$1.14	\$1.03	
0413	#RP-4CP	\$1.64	\$1.51	\$1.45	(4c)

Imprint Area: 3.75" W x 2" H

Case Pack / Dimensions / Weight: 250 ct./15" x 15" x 10"/10 lbs.

Item Dimensions: 4 5/8" W x 1 5/8" H

#RP Prices include a one-color imprint on one side. Additional imprint colors: add \$0.30 (g) each. Screen charge \$45.00 (g) per color. For puff ink, please specify when ordering. Add \$0.10 (a) for generic camo material.

#RP-4CP Prices include a four-color process sublimation imprint. Setup \$45.00 (g).



#RP

#RP-4CP

Promo Band

High-Quality Neoprene (Wetsuit Material)

		250	500	1000	
0287	#PB8	\$0.73	\$0.60	\$0.49	(4c)

Imprint Area: 7" W x 0.375" H

Case Pack / Dimensions / Weight: 500 ct./15" x 15" x 10"/6 lbs.

Item Dimensions: 2 5/8" Diameter x 1/2" W

Prices include a one-color imprint on one side. One color, one side only. For camo material add \$0.10 (a). Screen Charge \$45.00 (g).



#PB-8

FUNCTIONform

NUMO ORIGINAL

New for 2012! BroadBand™

High-Quality Neoprene (Wetsuit Material)

		250	500	1000	
0690	#0690	\$0.75	\$0.61	\$0.51	(3c)

Imprint Area: 6.75" W x 0.75" H

Case Pack / Dimensions / Weight: 500 ct./15" x 15" x 10"/8 lbs.

Item Dimensions: 2 5/8" Diameter x 1" W

Prices include a one-color imprint on one side. One color, one side only. For camo material add \$0.10 (a). Screen Charge \$45.00 (g).



#0690

Popular Wider-Width
Version of our Promo Band



#9800-03



#98004MP



#98002MP



#MPRND



#MPLG

Jersey-Shape Mousepad

Natural Rubber • Four-Color Process

		150	250	500	1000	
9800-03	#9800-03	\$4.17	\$3.63	\$3.11	\$2.59	(4c)

Imprint Area: 5.25" W x 6" H + Sleeve & Shoulder Area + bleed

Case Pack / Dimensions / Weight: 200 ct./18" x 18" x 14"/38 lbs.

Item Dimensions: 9 5/8" W x 9" H

Prices include a four-color process sublimation imprint. Setup \$45.00 (g). Item proof \$45.00 (g) + piece price + shipping.

Standard-Shape Mousepads

Natural Rubber • Four-Color Process

		150	250	500	1000	
9800-04	#98004MP Round	\$3.58	\$3.11	\$2.59	\$2.07	
9800-02	#98002MP Rectangle	\$3.58	\$3.11	\$2.59	\$2.07	(4c)

Imprint Areas:

#98004MP: 7.5" Diameter

#98002MP: 8.5" x 6.75"

(Add 0.25" Bleed to Item Dimensions)

Case Pack / Dimensions / Weight: 150 ct./18" x 18" x 14"/28 lbs.

Item Dimensions:

#98004MP: 8" Diameter

#98002MP: 9" x 7 1/4"

Prices include a four-color process sublimation imprint. Setup \$45.00 (g). Item proof \$45.00 (g) + piece price + shipping.

Solid-Color Neoprene Mousepads

Neoprene • Direct Silkscreen Imprint

		150	250	500	1000	
0204	#MPRND Round	\$2.76	\$2.24	\$1.89	\$1.72	
0008	#MPLG Rectangle	\$2.76	\$2.24	\$1.89	\$1.72	(4c)

Imprint Areas:

#MPRND: 7.5" Diameter

#MPLG: 9.25" x 7.75"

Case Pack / Dimensions / Weight: 150 ct./18" x 18" x 14"/24 lbs.

Item Dimensions:

#MPRND: 8" Diameter

#MPLG: 10" x 8 1/2"

Prices include a one-color imprint. Additional imprint colors add \$0.30 (g) per color. Screen Charge \$45.00 (g) per color.

FUNCTIONform

NUMO ORIGINAL

Mobile Accessory Holder

High-Quality Neoprene (Wetsuit Material) or EcoCoolie 2.0™ Foam With Key Ring and Carabiner Clip
Fits iPhone, iPod Classic, and Most Smartphones.

		100	250	500	1000
0549	#549 Neoprene	\$3.15	\$2.65	\$2.32	\$1.99
0549	#549-4CP Neoprene Four-Color Process	\$4.04	\$3.54	\$3.03	\$2.61
0557	#557 EcoCoolie 2.0™ Foam	\$3.28	\$2.76	\$2.41	\$2.07 (4c)

Imprint Areas: 2.5" W x 3.5" H

Case Pack / Dimensions / Weight: 150 ct./15" x 15" x 10"/10 lbs.

Item Dimensions: 3 1/4" W x 5 1/8" H

Prices include a one-color imprint on one or two sides. Additional imprint colors: add \$0.30 (g) per color per location. Screen charge \$45.00 (g) per color per location. For puff ink, please specify when ordering. Add \$0.20 (a) for generic camo material.

-4CP Prices include a four-color process sublimation imprint on two sides. Setup \$45.00 (g). Item proof \$45.00 (g) + piece price + shipping.



#549-4CP

FUNCTIONform

NUMO ORIGINAL

Cable Keeper™ Divided Bag

1/8" High-Density Open-Cell Scuba Foam

		150	300	600	1200
9210-50	#21050S-DIV	\$4.84	\$4.32	\$3.97	\$3.45 (4c)

Imprint Area: 3.5" W x 3.5" H

Case Pack / Dimensions / Weight: 50 ct./19" x 15" x 9"/15 lbs.

Item Dimensions: 15" W x 8 1/2" H

Prices include a one-color imprint on one side. Second side imprint add \$0.30 (g). Additional imprint colors: add \$0.30 (g) per color per side. Screen charge \$45.00 (g) per color per side.



#21050S-DIV

*Also Great For: Travel • Cosmetics • Jewelry • Small Tools • First Aid Kit
Musical Instrument Cords & Strings • Art Supplies*



#9952



New for 2012! Flying-V iPad Stand

Aluminum • Fits iPad and other Touch-Screen Tablets and Devices • One-Color Imprint Only

	50	100	200	500	
9952	#9952	\$6.31	\$5.89	\$5.47	\$5.03 (4c)

Imprint Area: 2.5" W x 0.75" H

Case Pack / Dimensions / Weight: 100 ct./28" x 16" x 7"/31 lbs.

Item Dimensions: 3 1/2" W x 2 1/4" H x 3 1/16" D

Prices include a one-color imprint on one side. Screen Charge \$45.00(g).

Perfect for Business Cards!



Fits Your Smartphone!





#9950

This item is

MAILABLE!

New for 2012! BudBear™ Earbuds Holder

Aluminum • Keeps Earbuds & Cord Neat & Convenient • One-Color Imprint Only

		100	250	500	1000	
9950	#9950	\$1.76	\$1.59	\$1.44	\$1.32	(4c)

Imprint Area: 1" W x 1.25" H

Case Pack / Dimensions / Weight: 250 ct./8" x 8" x 7"/10 lbs.

Item Dimensions: 3 1/2" W x 2 1/4" H x 3 11/16" D

Prices include a one-color imprint on one side. Second side imprint add \$0.30 (g). Screen Charge \$45.00(g). Earbuds not included.

*See the
BudBear™
in Action!*

Scan this code
with your smartphone.





Fokus™ Hangs Conveniently From the Camera Strap While the Camera Is Being used.

FUNCTIONform
NUMO ORIGINAL

New for 2012!

Fokus™ DSLR Camera Cover

High-Quality Neoprene (Wetsuit Material)

Fits Hobbyist/Prosumer Digital SLR Cameras

(e.g.– Canon Digital Rebel series, Nikon D3100, and similar)

		50	100	250	500	1000	
0706	#0706	\$8.35	\$7.43	\$6.68	\$6.08	\$5.52	(5c)

Imprint Area: 3.8" x 1.75"

Case Pack / Dimensions / Weight: 250 ct./15" x 15" x 10"/6 lbs.

Item Dimensions: 6" W x 3 3/8" H x 7 1/2" D

#0706 Prices include a one-color imprint on one side. Additional imprint colors or locations add \$0.30 (g) each. Screen charge \$45.00 (g) per color (per side if second side imprint is different). Add \$1.40 (a) for generic camo material.

See the Fokus™
in Action!
Scan this code
with your smartphone.



#0706

New! Neoprene iPad Sleeve

High-Quality Neoprene (Wetsuit Material)

Fits iPad and iPad2

	24	48	96	144	288
--	----	----	----	-----	-----

5 0673	#0673	\$4.21	\$3.87	\$3.62	\$3.36	\$3.20
0673	#0673-4CP	\$5.73	\$5.30	\$4.88	\$4.63	\$4.46 (5c)

Imprint Area: 6" W x 6.5" H

Case Pack / Dimensions / Weight: 50 ct./15" x 15" x 10"/11 lbs.

Item Dimensions: 8 1/2" W x 10" H

#0673 Prices include a one-color imprint on one side. Additional imprint colors or locations add \$0.30 (g) each. Screen charge \$45.00 (g) per color (per side if second side imprint is different). Add \$1.40 (a) for generic camo material.

#0673-4CP Prices include a four-color process imprint on one side. Setup charge \$45.00 (g). Item proof \$45.00 (g) + piece price + shipping.

See the
iPad Sleeve
in Action!
Scan this code
with your smartphone.



#0673



#0673-4CP

New! Neoprene Kindle Sleeve

High-Quality Neoprene (Wetsuit Material)

Fits Kindle Fire and Kindle with Full Keyboard*

	24	48	96	144	288
--	----	----	----	-----	-----

5 0670	#0670	\$2.86	\$2.61	\$2.44	\$2.27	\$2.10
0670	#0670-4CP	\$3.62	\$3.36	\$3.11	\$2.95	\$2.78 (5c)

Imprint Area: 4.5" W x 6"

Case Pack / Dimensions / Weight: 50 ct./15" x 15" x 10"/11 lbs.

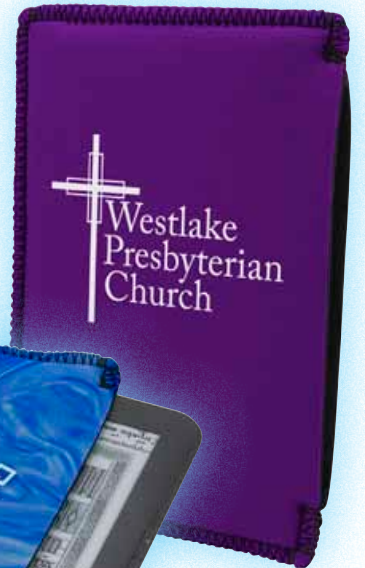
Item Dimensions: 5 7/8" W x 8 3/8" H

#0670 Prices include a one-color imprint on one side. Additional imprint colors or locations add \$0.30 (g) each. Screen charge \$45.00 (g) per color (per side if second side imprint is different). Add \$1.40 (a) for generic camo material.

#0670-4CP Prices include a four-color process imprint on one side. Setup charge \$45.00 (g). Item proof \$45.00 (g) + piece price + shipping.

*Sleeves are available for other Kindle models. Contact factory for information.

#0670



#0670-4CP



#0708-4CP


FUNCTIONform
 NUMO ORIGINAL

Get to know Numo...

Laptop Sleeve Sizing:

OUR NEWEST LINE OF LAPTOP SLEEVES are designed around Apple's very popular MacBook Air and MacBook Pro computers. These have a snug fit and protect laptops from minor scrapes and bumps.

MANY OTHER BRANDS' COMPUTERS are very close in size to the Apple units, and our neoprene material has enough stretch that one of our stock items will likely fit. If you think your computer's measurements are not close enough, we can offer custom sizes. Just contact our factory for more information.

#0709

New for 2012! Neoprene Laptop Sleeve

High-Quality Neoprene (Wetsuit Material) • Stretches to Fit Snugly

Custom Sizes Available!

		24	48	96	144	288
0707	#0707 For 11" MacBook Air	\$7.55	\$6.71	\$6.04	\$5.49	\$4.99
0707	#0707-4CP For 11" MacBook Air	\$11.47	\$10.04	\$8.92	\$8.03	\$7.30
0708	#0708 For 13" MacBook Air	\$7.69	\$6.84	\$6.15	\$5.59	\$5.09
0708	#0708-4CP For 13" MacBook Air	\$12.27	\$10.74	\$9.55	\$8.59	\$7.81
0709	#0709 For 13" MacBook Pro	\$8.19	\$7.28	\$6.55	\$5.95	\$5.41
0709	#0709-4CP For 13" MacBook Pro	\$12.94	\$11.32	\$10.06	\$9.06	\$8.23
0710	#0710 For 15" MacBook Pro	\$9.72	\$8.64	\$7.77	\$7.07	\$6.42
0710	#0710-4CP For 15" MacBook Pro	\$15.47	\$13.54	\$12.03	\$10.83	\$9.84
0711	#0711 For 17" MacBook Pro	\$9.91	\$8.81	\$7.92	\$7.20	\$6.55
0711	#0711-4CP For 17" MacBook Pro	\$16.28	\$14.24	\$12.66	\$11.39	\$10.36 (5c)

Imprint Area: **#0707:** 10.5" x 7"; **#0708:** 11.3" x 8"; **#0709:** 11.3" x 8.19"; **#0710:** 12.8" x 9.12"; **#0711:** 14.1" x 9.8"

Case Pack / Dimensions / Weight: 25 ct./15" x 15" x 10" / **#0707:** 10 lbs., **#0708 & #0709:** 12 lbs., **#0710:** 14 lbs., **#0711:** 16 lbs.

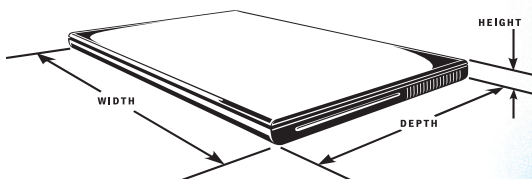
Item Dimensions: **#0707:** 12 1/8" x 8 3/4"; **#0708:** 13 3/8" x 9 7/8"; **#0709:** 13 3/8" x 10 1/8"; **#0710:** 14 3/4" x 11"; **#0711:** 16" x 11 5/8"

Prices include a one-color imprint on one side. Additional imprint colors or locations add \$0.30 (g) each. Screen charge \$45.00 (g) per color (per side if second side imprint is different). Add \$1.40 (a) for generic camo material.

-4CP Prices include a four-color process imprint on one side. Setup charge \$45.00 (g). Item proof \$45.00 (g) + piece price + shipping.

Dimensions of the computers our sleeves were designed to fit.

Model	Width	Depth	Height
Macbook Air 11"	11.8"	7.56"	0.68"
Macbook Air 13"	12.8"	8.94"	0.68"
Macbook Pro 13"	12.78"	8.94"	0.95"
Macbook Pro 15"	14.35"	9.82"	0.95"
Macbook Pro 17"	15.47"	10.51"	0.98"



Since laptops vary from one brand to another, you can measure the closed size of your computer and compare it with the sizes listed above.



New Sizes! Zippered Neoprene Laptop Sleeve

High-Quality Neoprene (Wetsuit Material) • Zippered Closure • Black Neoprene Gusset

Custom Sizes Available!

		12	24	48	96	144	
0466	14LAP	\$17.47	\$16.65	\$15.98	\$15.48	\$14.98	
0466	14LAP-4CP	\$23.55	\$22.37	\$21.53	\$20.86	\$20.18	
0467	15LAP	\$18.98	\$17.98	\$17.15	\$16.48	\$15.98	
0467	15LAP-4CP	\$24.22	\$23.38	\$22.71	\$21.87	\$21.19	
0468	17LAP	\$21.87	\$20.86	\$19.85	\$19.00	\$18.16	
0468	17LAP-4CP	\$27.42	\$26.41	\$25.23	\$24.39	\$23.21	(5c)

Suggested Imprint Area: 5" W x 3" H in lower-left corner

Case Pack / Dimensions / Weight:

#14LAP: 25 ct./15" x 15" x 10"/12 lbs.; **#15LAP:** 25 ct./15" x 15" x 10"/15 lbs.; **#17LAP:** 25 ct./18" x 18" x 14"/19 lbs.

Item Dimensions: **#14LAP:** 15 ¼" x 13 ¼" x 1"; **#15LAP:** 17 ¼" x 14 ¼" x 1"; **#17LAP:** 16 ¾" x 13" x 1 ¼"

Prices include a one-color imprint on one side. Additional imprint colors or locations add \$0.30 (g) each. Screen charge \$45.00 (g) per color (per side if second side imprint is different). Add \$1.40 (a) for generic camo material.

Prices include a four-color process imprint on one side. Setup charge \$45.00 (g). Item proof \$45.00 (g) + piece price + shipping.

THE "SIZE" OF A LAPTOP (notebook computer) is determined by the size of the screen, measured **diagonally**. The bezel, or frame, around the screen is not part of this measurement.





#273

FUNCTIONform
NUMO ORIGINAL

Scuba Tote

1/8" High-Density Open-Cell Scuba Foam
Zipper Closure

		50	100	300	600	
9273	#273	\$9.01	\$8.16	\$7.49	\$6.82	(4c)

Imprint Area: 5" W x 9" H

Case Pack / Dimensions / Weight: 50 ct./17" x 17" x 13"/12 lbs.

Item Dimensions: 16" W x 12" H

Prices include a one-color imprint on one side. Additional colors add \$0.30 (g) per color per side. Screen Charge \$45.00 (g) per color per side.



#0715

#0715-4CP

New for 2012! U-Bag™

High-Quality Neoprene (Wetsuit Material) • Zipper Closure
Plastic Swivel Clip

		50	100	250	500	1000
0715	#0715	\$5.00	\$4.50	\$4.09	\$3.75	\$3.46
0715	#0715-4CP	\$8.10	\$7.08	\$6.30	\$5.67	\$5.15 (5c)

Imprint Area: 5" W x 4" H

Case Pack / Dimensions / Weight: 50 ct./15" x 15" x 10"/12 lbs.

Item Dimensions: 8 1/4" W x 6" H x 1 1/4" D

Prices include a one-color imprint in flat ink on one side. Additional imprint colors add \$0.30 (g) each. For second side imprint add \$0.30 (g) per color, per side. For camo material add \$1.60 (a). Screen Charge \$45.00 (g) per color per side.

-4CP Prices include a four-color process sublimation imprint on one side. Setup \$45.00 (g). Item proof \$45.00 (g) + piece price + shipping.

CASE STUDY:

ITEM: Small Zippered Bags

TYPE OF BUSINESS: School

THE PROMOTION: I solved a problem at my son's school with your small bags with zippers. The students sell "scrip" (gift cards) as a fundraiser, and people were keeping them in zip-top plastic bags... cheesy! So [my business] sponsored the vinyl bags by having our logo on the second side, and we donated them to the school.

RESULTS: WHAT MADE IT SUCCESSFUL? It turned out that all the 6th-graders were also using these for their lunch money and collecting "change". At the end of the year, they donated the collections to the local mission for the homeless where the students do a singing ministry each year.

—Tim L.



Mesh Bag – Large

1/8" High-Density Open-Cell Scuba Foam
Mesh Back and Zipper Closure

		150	250	500	1000
9212	#212	\$4.57	\$4.18	\$3.69	\$3.40
9212	#212-4CP	\$5.92	\$5.50	\$5.08	\$4.75 (4c)

Imprint Area: 10" W x 8" H

Case Pack / Dimensions / Weight: 125 ct./17" x 17" x 13"/12 lbs.

Item Dimensions: 11 1/4" W x 8 3/4" H

Prices include a one-color imprint on one side. Second side imprint add \$0.30 (g). Additional imprint colors: add \$0.30 (g) per color per side. Screen charge \$45.00 (g) per color per side. Add \$0.36 (a) for Green Camo or Tan Camo material.



#212

Mesh Bag – Small

1/8" High-Density Open-Cell Scuba Foam
Mesh Back, Zipper Closure, and Clip Hook

		150	250	500	1000
9213	#213	\$3.47	\$3.03	\$2.69	\$2.49
9213	#213-4CP	\$4.75	\$4.33	\$3.75	\$3.42 (4c)

Imprint Area: 6" W x 4" H

Case Pack / Dimensions / Weight: 125 ct./17" x 17" x 13"/12 lbs.

Item Dimensions: 6 7/8" W x 4 7/8" H

Prices include a one-color imprint on one side. Second side imprint add \$0.30 (g). Additional imprint colors: add \$0.30 (g) per color per side. Screen charge \$45.00 (g) per color per side. Add \$0.36 (a) for Green Camo or Tan Camo material.



#213

Flag Case

Expanded Vinyl with Clear Vinyl on Back Side
Zipper Closure • Imprint on One Side Only
Royal Blue Trimmed in Red or White Trimmed in Black

		50	100	300	600
9238	#238	\$6.82	\$5.93	\$5.48	\$5.11 (4c)

Imprint Area: 10" W x 5" H

Case Pack / Dimensions / Weight: 50 ct. / 19" x 15" x 9" / 15 lbs.

Item Dimensions: 16" W x 10" H

Prices include a one-color imprint on one side. Additional colors add \$0.30 (g) per color. Screen Charge \$45.00 (g) per color per side.



#238



#240EV

Economical Briefcase

Expanded Vinyl, Clear Vinyl, or Laminated Nylon
With Zipper Closure

		100	300	600	1200
9240-01	#240EV Expanded Vinyl	\$4.76	\$4.14	\$3.83	\$3.32
9240-01	#240CV Clear Vinyl	\$4.39	\$3.83	\$3.37	\$2.73
9240-01	#240LN Laminated Nylon	\$7.80	\$6.94	\$6.76	\$6.33 (4c)



#240LN

Imprint Area: 12" W x 8.5" H

Case Pack / Dimensions / Weight: 50 ct./19" x 14" x 8"/20 lbs.

Item Dimensions: 16" W x 11" H

Prices include a one-color imprint on one side. Additional colors add \$0.30 (g) per color per side.
Screen Charge \$45.00 (g) per color per side

CASE STUDY:

ITEM: #240EV Economical Briefcase

TYPE OF BUSINESS: Disaster Management Organization

THE PROMOTION: Economical Briefcase was used as a container for a kit including items to be used in documentation of damage for insurance claims. The contact information for the management organization was printed onto the outside of the briefcase.

RESULTS: Efficient, consistent reporting of damage claims.

WHAT MADE IT SUCCESSFUL? A carefully-planned list of components neatly-packaged and easily distributed inside an imprinted case.

—Michael P.



Memorial Bag

Expanded Vinyl with Zipper Closure

		100	300	600	1200
9239-01	#23901 13" x 10"	\$3.77	\$3.28	\$2.83	\$2.48
9239-02	#23902 16" x 12"	\$4.39	\$3.82	\$3.46	\$3.25 (4c)

Imprint Area:

#23901: 10" W x 7" H

#23902: 13" W x 9" H

Case Pack / Dimensions / Weight: 50 ct./19" x 15" x 9"/15 lbs.

Item Dimensions:

#23901: 13" W x 10" H

#23902: 16" W x 12" H

Prices include a one-color imprint on one side. Additional colors add \$0.30 (g) per color per side.
Screen Charge \$45.00 (g) per color per side.



#23902

Horizontal Bank Bags

Expanded Vinyl or Laminated Nylon with Zipper Closure

		150	300	600	1200
9210-02	#21002EV 10 1/2" X 5 1/2" Expanded Vinyl	\$2.72	\$2.36	\$2.07	\$1.62
9210-02	#21002LN 10 1/2" X 5 1/2" Laminated Nylon	\$3.49	\$3.04	\$2.68	\$2.42
9210-04	#21004EV 11" X 6" Expanded Vinyl	\$2.89	\$2.52	\$2.16	\$1.71
9210-04	#21004LN 11" X 6" Laminated Nylon	\$4.19	\$3.64	\$3.12	\$2.83 (4c)

Imprint Area:

#21002: 8" W x 4" H

#21004: 8.5" W x 4.5" H

Case Pack / Dimensions / Weight: 150 ct./17" x 17" x 13"/24 lbs.

Item Dimensions:

#21002: 10 1/2" W x 5 1/2" H

#21004: 11" W x 6" H

Prices include a one-color imprint on one side. Additional colors add \$0.30 (g) per color per side.
Screen Charge \$45.00 (g) per color per side.



#21002EV

#21004LN

Custom Sizes Available!



#0651

#0651-4CP

This item is

MAILABLE!

Card Guard™

High-Quality Neoprene (Wetsuit Material) with Keyring
Fits Bank Cards, Driver's Licenses, Retail Gift Cards,
Hotel Key Cards, Student I.D. Cards, and Business Cards

		100	250	500	1000	
0651	#0651	\$1.82	\$1.65	\$1.44	\$1.24	
0651	#0651-4CP	\$2.15	\$1.98	\$1.82	\$1.65	(4c)

Imprint Area: 2.5" W x 1.5" H

Case Pack / Dimensions / Weight: 500 ct./15" x 15" x 10"/17 lbs.

Item Dimensions: 4 1/8" W x 2 3/4" H

Prices include a one-color imprint on one or two sides. Additional colors add \$0.30 (g) per color per side. Add \$0.20 (a) for generic camo material. Screen Charge \$45.00 (g) per color per side.



#21003

Coin Bags

Expanded Vinyl with Zipper Closure

		150	300	600	1200	
9210-01	#21001 Pocket Holder	\$1.64	\$1.43	\$1.07	\$0.99	
9210-03	#21003 Mini Wallet	\$1.77	\$1.53	\$1.26	\$1.05	(4c)

Imprint Area:

#21001: 3.75" W x 1.75" H

#21003: 4" W x 2" H

Case Pack / Dimensions / Weight: 250 ct./19" x 14" x 8"/33 lbs.

Item Dimensions:

#21001: 4 1/2" W x 2 1/2" H

#21003: 5" W x 3" H

Prices include a one-color imprint on one or two sides. Additional colors add \$0.30 (g) per color per side. Screen Charge \$45.00 (g) per color per side.

Curved Zipper Locking Bank Bag

Expanded Vinyl or Laminated Nylon with Heavy-Duty Brass Zipper
Heavy Vinyl Binding & Swing Locks Standard
(See Chart Below for More Options.)

		25	50	100	300
925001	#25001EV 10 1/2" x 9" Expanded Vinyl	\$18.89	\$17.78	\$16.15	\$14.55
925001	#25001LN 10 1/2" x 9" Laminated Nylon	\$21.17	\$20.18	\$18.38	\$16.40
925002	#25002EV 12" x 10" Expanded Vinyl	\$19.08	\$18.02	\$16.33	\$14.73
925002	#25002LN 12" x 10" Laminated Nylon	\$22.33	\$21.15	\$19.44	\$17.36 (4c)

Imprint Areas:

#25001EV/LN: 8.5" W x 5.75" H

#25002EV/LN: 10" W x 6" H

Case Pack / Dimensions / Weight: 50 ct./17" x 17" x 13"/32 lbs.

Prices include a one-color imprint on one side. Additional colors or locations add \$0.30 (g) per color per side. Screen Charge \$45.00 (g) per color per side.

Locking Bank Bag

Expanded Vinyl or Laminated Nylon with Heavy-Duty Brass Zipper
Heavy Vinyl Binding & Swing Locks Standard
(See Chart Above for More Options.)

		25	50	100	300
925101	#25101EV 10 1/2" x 7" Expanded Vinyl	\$17.77	\$15.90	\$15.58	\$14.74
925101	#25101LN 10 1/2" x 7" Laminated Nylon	\$19.94	\$18.21	\$16.64	\$15.86
925102	#25102EV 10 1/2" x 9" Expanded Vinyl	\$18.44	\$17.20	\$15.78	\$14.17
925102	#25102LN 10 1/2" x 9" Laminated Nylon	\$19.94	\$18.55	\$16.99	\$16.21
925103	#25103EV 12" x 10" Expanded Vinyl	\$19.16	\$18.10	\$16.49	\$14.72
925103	#25103LN 12" x 10" Laminated Nylon	\$22.63	\$21.00	\$19.28	\$17.38
925104	#25104EV 16" x 12" Expanded Vinyl	\$20.43	\$18.91	\$17.40	\$15.45
925104	#25104LN 16" x 12" Laminated Nylon	\$24.79	\$23.32	\$21.14	\$18.95 (4c)

Imprint Areas:

#25101: 8.5" W x 5" H; #25102: 8.5" W x 7" H;

#25103: 10" W x 8" H; #25104: 14" W x 9"

Case Pack / Dimensions / Weight: 50 ct./17" x 17" x 13"/32 lbs.

Prices include a one-color imprint on one side. Additional colors or locations add \$0.30 (g) per color per side. Screen Charge \$45.00 (g) per color per side.



Locking Bank Bag Options (6c):

Consecutive Numbering	\$1.00
Pop-Up Locks	\$2.34
Master Keyed/Keyed Alike (Add 4-6 Weeks)	\$1.34
Double-Stitched, Unbound Edges	\$0.40
Window Pocket (Contact Factory for Sizes.)	\$1.20
Additional Master Keys	\$1.34



Get to know Numo...

Drinkware Printing Types:

UV INKS UV-cured inks are a relatively new technology that allows us to print directly onto ceramics and glass. It has become the default for most single-color printing on many of our drinkware items.

Using UV Inks has several advantages over traditional ceramic inks:

- They offer some colors that would be impossible or cost-prohibitive with ceramic inks. Bright pinks and purples are no problem for UV inks.
- They are more opaque, reducing the need for double-printing or printing down white to add a color on top of it in many cases.
- The cure time is a fraction of what traditional ceramic inks require. (30 seconds compared to about 2.5 hours!)
- There is less danger of burns, fire, etc., so our staff and equipment are safer.
- Their formulations are free from lead, cadmium, and other heavy metals, complying with CPSIA standards, and no labeling needed for California Prop 65!

UV inks do have a few drawbacks, though. There is some loss of durability compared to traditional inks, and they are slightly more prone to scratching. In perspective, though, our testing shows that UV inks will hold up to over 500 washes in standard domestic dishwashers, which should be plenty long for most promotional uses.

CERAMIC INKS: Ceramic fired inks are the tradition when printing onto glass or ceramics. They are extremely durable, and all the inks we use at Numo today are free of lead. However, after application to the item, they need to be fired in a lehr for over 2 hours at just over 1100° F. If, after firing, any printing problems are found, it's a time-consuming process to test another run to verify the issues have been resolved.

Also, to clarify, the name “ceramic” refers to the ink’s formulation, not the surface onto which it’s applied. Ceramic inks are also used on glass items.

DECAL: For very tight registration or items that have a concave sidewall, we use ceramic inks on a decal. These decals are screen-printed onto paper, with a layer of transparent ink covering the design. Once dry, the printed paper decals are soaked with water, releasing the imprint from the paper. The transparent layer, called a “cover coat” keeps the artwork together after it’s released from the paper. The imprint can then be slid off the paper and onto the item, the water squeegee’d out (just like the decals on a model airplane), and then fired in the lehr just like the ceramic inks mentioned above.

FX INKS: Magic ink is *thermochromatic*, meaning it becomes transparent, or “disappears”, when the temperature is raised to a certain point. Numo has magic ink available in black, and it can be printed over your imprint so that your message is revealed when the ink is heated by the beverage in the cup. Magic ink is printed as an additional color on top of one or more ceramic inks. The creative possibilities of using an imprint that changes are almost limitless!

PRECIOUS METALS: Numo offers decoration using precious metals (gold or silver) for an upscale look to your message. These can be used within the main imprint area, or as a halo band around the lip of the item. Contact Numo for details on pricing and availability.

SUBLIMATION: Sublimation, often used interchangeably with “Four-Color Process” allows us to put photographic-quality images onto some of our ceramics items for a reasonable cost and very low minimum quantity. In sublimation, the image gets printed onto paper first, then transferred to the item. Unlike decal, though, sublimation simply uses about 30 seconds of heat and high pressure to make the transfer happen. It does not need the long curing time like ceramic inks.



The main negatives with sublimation is the limited number of items it can be used on, and some PMS colors are not able to be matched. (See the article on Four-Color Process on pages 6-7 for more information.)

Sublimation inks are also transparent, so they need an opaque white surface in order for them to show up.

However, our sublimation process is compliant with CPSIA and Prop 65 standards.

Four-Color Process Sublimation Mug

11 oz. Ceramic

		72	144	288	576	1008
	9312-1621 #31216-21 White	\$5.31	\$4.64	\$4.33	\$4.12	\$3.83
	9312-1613 #31216-13 Black	\$8.16	\$7.10	\$6.12	\$5.74	\$5.33 (5c)

Imprint Area: 8.25" W x 3.625" H

Master Pack / Dimensions / Weight: 36 ct./18" x 13" x 14"/36 lbs.

Item Dimensions: 4 3/4" W x 3 3/4" H x 3 1/4" Diameter

Prices include a four-color process sublimation imprint. Setup \$45.00 (g). Item proof \$45.00 (g) + piece price + shipping.





#31216-13



#31216-21

Four-Color Process El Grande™ Sublimation Mug

15 oz. Ceramic

		72	144	288	576	1008
	9308-2521 #30825-21 White	\$7.20	\$6.26	\$5.40	\$5.13	\$4.77
	9308-2513 #30825-13 Black	\$9.72	\$8.47	\$7.38	\$6.80	\$6.27 (5c)

Imprint Area: 9" W x 3.6875" H

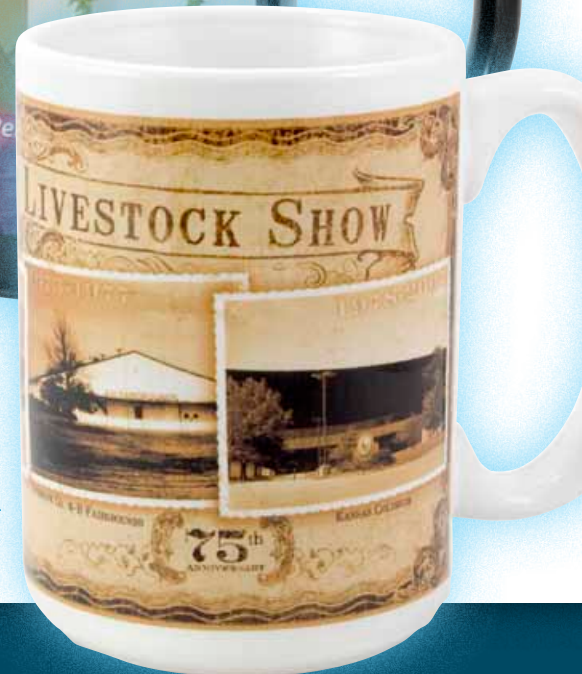
Master Pack / Dimensions / Weight: 36 ct./19" x 14" x 17"/46lbs.

Item Dimensions: 4 1/2" W x 5" H x 3 1/4" Diameter

Prices include a four-color process sublimation imprint. Setup \$45.00 (g). Item proof \$45.00 (g) + piece price + shipping.



#30825-13



#30825-21

COLD



FILL



#356-MAG

HOT



MAGIC

Magic Mug™

11 oz. Ceramic

	72	144	288	576	1008	
9356MAG #356-MAG	\$3.67	\$3.84	\$3.57	\$3.28	\$3.15	(5c)

Imprint Area: 3" W (or 7.75" Wrap) x 2.5" H

Master Pack / Dimensions / Weight: 36 ct./18" x 13" x 14"/36 lbs.

Item Dimensions: 4 3/4" W x 3 3/4" H x 3 1/4" Diameter

Prices include a one-color imprint on one or two sides and one color Magic ink on one side. Add \$45.00 (g) Magic ink screen charge in addition to regular imprint screen charges. For 2nd side Magic or Full-Wrap Magic, add \$1.00 (g). For additional imprint colors, add \$0.40 (g) per color. Screen Charge \$45.00 (g) per color. For artwork requiring tight registration, decal pricing may be required (as determined by factory). See back of catalog for decal pricing info.

Get to know Numo...

Making Magic:

MAGIC INK BECOMES TRANSPARENT, or “disappears” when it gets hot. The heat from hot coffee or tea warms up the ceramic mug, and causes the Magic Ink to change from an opaque black to clear, revealing anything printed behind it. When the mug cools back to room temperature, the ink becomes opaque once again.

TO MAKE A GREAT MAGIC MUG PROMO, think of ways you can use Magic Ink to hide a portion of your message, then reveal it later. Things like a curtain that disappears to reveal what’s behind. Or perhaps an image of a computer screen or TV that turns on to reveal your message on-screen. Showing a question, then revealing an answer is a popular idea. A night sky can turn to daytime.

*EZ Magic™
Stock Design Program
Available!*



MUGS

Four-Color Process Magic Mug™

11 oz. Ceramic

	72	144	288	576	1008
--	----	-----	-----	-----	------

93121621MAG	#31216-MAG	\$8.68	\$7.54	\$6.92	\$6.68	\$6.24	(5c)

Imprint Area: Sublimation Area: 8.25" W x 3.625" H;
 Magic Ink Area: 3" W (or 7.75" Wrap) x 2.5" H

Master Pack / Dimensions / Weight: 36 ct./18" x 13" x 14"/36 lbs.

Item Dimensions: 4 3/4" W x 3 3/4" H x 3 1/4" Diameter

Prices include a full-color sublimation imprint on one or two sides and a one-color Magic ink imprint on one side. Add \$45.00 (g) Magic ink screen charge in addition to regular setup charges. For 2nd side Magic or Full-Wrap Magic, add \$1.00 (g). Magic Ink Screen Charge \$45.00 (g); 4CP Setup \$45.00 (g).

THE MAIN THING TO WATCH OUT FOR is that the ink can't change into something else. One possibly helpful way to think about it: Print out your base art onto a sheet of paper. For the Magic part, print or draw it on a piece of clear film. Lay the film over the art. This would be the "cold" iteration of your concept. Lifting the film back off the art will show the "hot" iteration. If your concept works in this manner, it will probably work with our Magic Mugs.

STILL STUMPED FOR IDEAS? See our web site for our EZ Magic™ program, offering stock designs that you can use to add your own message.



COLD



FILL



#31216-MAG

HOT





Creative Mug

11 oz. Ceramic

		72	144	288	576	1008	
5 DAY	9356-0121	#35601-21 White	\$2.08	\$1.90	\$1.77	\$1.65	\$1.49
	9356	#35601 Cobalt, Black, or Almond	\$3.10	\$2.80	\$2.55	\$2.23	\$2.07 (5c)

Imprint Area: 3" W (7.75" Wrap) x 2.5" H

Master Pack / Dimensions / Weight: 36 ct./18" x 13" x 14"/36lbs.

Item Dimensions: 4 3/4" W x 3 3/4" H x 3 1/4" Diameter

Prices include a one-color imprint on one or two sides. Additional imprint colors: add \$0.40 (g) each. Screen charge \$45.00 (g). For artwork requiring tight registration, decal pricing may be required (as determined by factory).

#35601



El Grande™ Mug

15 oz. Ceramic

		72	144	288	576	1008	
5 DAY	9517-0121	#51701-21 White	\$2.63	\$2.40	\$2.14	\$2.05	\$1.93
	9517-01	#51701 Black or Cobalt Blue	\$3.16	\$2.88	\$2.60	\$2.42	\$2.25 (5c)

Imprint Area: 3" W (7.75" Wrap) x 3" H

Master Pack / Dimensions / Weight: 36 ct./19" x 13" x 17"/46 lbs.

Item Dimensions: 4 1/2" W x 5" H x 3 1/4" Diameter

Prices include a one-color imprint on one or two sides. Additional imprint colors: add \$0.40 (g) each. Screen charge \$45.00 (g). For artwork requiring tight registration, decal pricing may be required (as determined by factory).

#51701

11 oz. Challenger Mug

11 oz. Ceramic

	72	144	288	576	1008
--	----	-----	-----	-----	------

5 DAY	9729-0121	#729-WH White	\$2.35	\$2.13	\$1.95	\$1.85	\$1.70
	9729-01	#729 Black or Cobalt Blue	\$2.81	\$2.66	\$2.57	\$2.49	\$2.27 (5c)

Imprint Area: 2.5" W (7.75" Wrap) x 2" H

Master Pack / Dimensions / Weight: 36 ct./19" x 13" x 17"/36 lbs.

Item Dimensions: 4 1/4" W x 4 1/2" H x 3 1/4" Diameter

Prices include a one-color imprint on one or two sides. Additional imprint colors: add \$0.40 (g) each. Screen charge \$45.00 (g). For artwork requiring tight registration, decal pricing may be required (as determined by factory).



#729



14 oz. Challenger Mug

14 oz. Ceramic

	72	144	288	576	1008
--	----	-----	-----	-----	------

5 DAY	9730-0121	#730-WH White	\$2.52	\$2.32	\$2.15	\$2.01	\$1.82
	9730-01	#730 Black or Cobalt Blue	\$3.14	\$2.85	\$2.70	\$2.53	\$2.32 (5c)

Imprint Area: 2.5" W x 2" H

Master Pack / Dimensions / Weight: 36 ct./19" x 13" x 17"/43 lbs.

Item Dimensions: 4 3/4" W x 5" H x 3 1/2" Diameter

Prices include a one-color imprint on one or two sides. Additional imprint colors: add \$0.40 (g) each. Screen charge \$45.00 (g). For artwork requiring tight registration, decal pricing may be required (as determined by factory).



#730





Solid-Color Bistro Mug

16 oz. Ceramic

		72	144	288	576	1008
5 DAY	9728-0121 #728-WH White	\$2.55	\$2.25	\$2.08	\$1.98	\$1.80
	9728-01 Black or Cobalt Blue	\$3.51	\$3.12	\$2.83	\$2.63	\$2.43 (5c)

Imprint Area: 3.7" W x 1.6" H

Master Pack / Dimensions / Weight: 36 ct./19" x 13" x 17"/41 lbs.

Item Dimensions: 5 1/4" W x 4 1/8" H x 3 3/4" Diameter

Prices include a one-color imprint on one or two sides. Additional imprint colors: add \$0.40 (g) each. Screen charge \$45.00 (g). For artwork requiring tight registration, decal pricing may be required (as determined by factory).



Matte Two-Tone Latté Mug

12 oz. Ceramic

		72	144	288	576	1008
5 DAY	9639 #839 Black or Cobalt Blue	\$4.15	\$3.76	\$3.37	\$3.15	\$2.96 (5c)

Imprint Area: 2.5" W x 2" H

Master Pack / Dimensions / Weight: 36 ct./19" x 13" x 17"/30 lbs.

Item Dimensions: 4 7/8" W x 3 3/4" H x 3 5/8" Diameter

Prices include a one-color imprint on one or two sides. Additional imprint colors: add \$0.40 (g) each. Screen charge \$45.00 (g). For artwork requiring tight registration, decal pricing may be required (as determined by factory).

*Tough Enough to Handle
Commercial Dishwashers
and Restaurant Use*

Restaurant-Grade Diner Mug

8 1/2 oz. Vitrified Ceramic

		72	144	288	576	1008
9851	#851-STD White or Natural	\$4.94	\$4.25	\$3.90	\$3.55	\$3.29
9851	#851-PRM Black or Cobalt Blue	\$6.53	\$5.79	\$5.29	\$4.95	\$4.42 (5c)

Imprint Area: 3" W x 2" H

Master Pack / Dimensions / Weight: 36 ct./18" x 13" x 14"/49 lbs.

Item Dimensions: 4 5/8" W x 3 7/8" H x 3 3/8" Diameter

Prices include a one-color decal imprint on one side. For second side or full-wrap decal, add \$0.55 (g). Additional imprint colors: add \$0.40 (g) each. Screen charge \$65.00 (g).



#851

Mug Boxes:



#1RBX4.4.4
White Gift Box Fits One 11 oz. Mug
\$0.95 (g)



#1RK1MUG
Mailer Fits One 11 oz. Mug
\$1.50 (g)



#1RK2MUG
Mailer Fits Two 11 oz. Mugs
\$2.15 (g)



#1RK4MUG
Mailer Fits Four 11 oz. Mugs
\$2.50 (g)



#492WH



#492BL

Neoprene-Wrap Ceramic Tumbler

16 oz. Ceramic with Silicone Lid

		72	144	288	576	1008
9492-0121	#492WH White Ceramic	\$6.51	\$5.64	\$5.38	\$5.12	\$4.60
9492-0113	#492BL Black Ceramic	\$6.68	\$5.80	\$5.54	\$5.28	\$4.76
9492-0121	#492WH-4CP White Ceramic Four-Color Process	\$7.08	\$6.23	\$5.97	\$5.68	\$5.08
9492-0113	#492BL-4CP Black Ceramic Four-Color Process	\$7.25	\$6.40	\$6.12	\$5.87	\$5.33 (5c)

Imprint Area: 3" W (7.5" Wrap) x 2.5" H

Master Pack / Dimensions / Weight: 24 ct./24" x 18" x 12"/31 lbs.

Item Dimensions: 6 3/4" H x 4 1/4" Diameter

Prices include a one-color imprint on one or two sides or full-wrap. Imprint on sleeve only. Additional colors (up to six total) add \$0.30 (g) per color per side. Screen Charge \$45.00 (g) per color. Add \$0.20 (a) for generic camo material.

-4CP Prices include a four-color process sublimation imprint. Setup \$45.00 (g). Item proof \$45.00 (g) + piece price + shipping.

*Now Available in
Four-Color
Process!*

31 Wrap Colors Available:



Double-Wall Ceramic Tumbler

11 oz. Ceramic with Black Silicone Lid

		72	144	288	576	1008	
9488-0121	#488	\$7.19	\$6.68	\$6.16	\$5.65	\$5.14	(5c)

Imprint Area: 3" W (8.5" Wrap) x 3" H

Master Pack / Dimensions / Weight: 24 ct./24" x 18" x 12"/31 lbs.

Item Dimensions: 7 1/16" H x 4 1/4" Diameter

Prices include a one-color imprint on one or two sides. Multiple-color imprint requires decal. Decal colors add \$0.40 (g) per color per side. Screen Charge \$65.00 (g) per color per side.



#488

Sweatproof!

Double-Wall Acrylic Tumbler

16 oz. Sonic-Welded Acrylic

		72	144	288	576	1008	
9490	#490	\$6.40	\$5.58	\$5.17	\$4.75	\$4.42	(5c)

Imprint Area: 3.5" W (9.5" Wrap) x 4.5" H

Master Pack / Dimensions / Weight: 24 ct./17" x 13" x 14"/14 lbs.

Item Dimensions: 6 3/4" H x 4" Diameter

Prices include a one-color imprint on one or two sides. Screen Charge \$45.00 (g).



#490

New! Collapsible Water Bottle

24 oz. • Push-Pull Spout and Carabiner Clip • Rolls Flat for Storage

		100	200	600	1000	
9497	#9497	\$3.39	\$2.99	\$2.69	\$2.29	(5c)

Imprint Area: 3" W x 2.5" H

Master Pack / Dimensions / Weight: 200 ct. / 22" x 16" x 12" / 16 lbs.

Item Dimensions: 6" W x 10 3/4" H

Prices include a one-color imprint on one side. Screen Charge \$45.00 (g).



#9497



Aluminum Water Bottles

BPA-Free Aluminum with Black Plastic Screw-On Cap and Aluminum Carabiner Clip

		48	96	144	288	576
9489	#489 750ml	\$5.65	\$4.82	\$4.32	\$3.98	\$3.65
9489	# 489-S 750ml Imprinted Sleeve	\$6.40	\$5.48	\$4.98	\$4.65	\$4.32
9489	# 489-S-4CP 750ml Four-Color Process Imprinted Sleeve	\$7.26	\$6.15	\$5.82	\$5.48	\$4.98
9489-04	# 489-04 600ml	\$5.35	\$4.52	\$4.02	\$3.68	\$3.35
9489-04	# 489-04S 600ml Imprinted Sleeve	\$6.06	\$5.05	\$4.46	\$4.12	\$3.75
9489-04	#489-04S-4CP 600ml Four-Color Process Imprinted Sleeve	\$6.82	\$5.72	\$5.08	\$4.71	\$4.31 (5c)

	Imprint Areas:	Master Pack / Dimensions / Weight:	Item Dimensions:
#489:	3" W (8.5" Wrap) x 5" H	48 ct./18.5" x 12.5" x 21"/17 lbs.	9 7/8" H x 2 7/8" Diameter
#489-S & #489-S-4CP:	8.25" W x 5.75" H	40 ct./18.5" x 12.5" x 21"/17 lbs.	9 7/8" H x 3 1/8" Diameter
#489-04:	3" W (8.5" Wrap) x 5" H	48 ct./18.5" x 12.5" x 21"/22 lbs.	8 1/2" H x 2 7/8" Diameter
#489-04S & #489-04S-4CP:	8.25" W x 4.25" H	40 ct./18.5" x 12.5" x 21"/16 lbs.	8 1/2" H x 3 1/8" Diameter

Prices include a one-color imprint on one side or full-wrap on sleeve only. Additional imprint colors add \$0.30 (g) per color. Screen charge \$45.00 (g) per color.

-4CP Prices include a four-color process sublimation imprint on sleeve only. Setup \$45.00 (g). Item proof \$45.00 (g) + piece price + shipping.



Stainless Steel Water Bottles

BPA-Free Stainless Steel with Black Plastic Screw-On Cap and Aluminum Carabiner Clip

		48	96	144	288	576
9481	#481 750ml	\$7.98	\$6.70	\$6.25	\$5.85	\$4.99
9481	# 481-S 750ml Imprinted Sleeve	\$8.28	\$7.07	\$6.62	\$6.21	\$5.35
9481	# 481-S-4CP 750ml Four-Color Process Imprinted Sleeve	\$9.82	\$8.36	\$7.85	\$7.34	\$6.29
9481-04	# 481-04 600ml	\$7.40	\$6.20	\$5.58	\$5.35	\$4.48
9481-04	# 481-04S 600ml Imprinted Sleeve	\$8.03	\$6.72	\$6.06	\$5.81	\$4.86
9481-04	#481-04S-4CP 600ml Four-Color Process Imprinted Sleeve	\$8.97	\$7.51	\$6.78	\$6.50	\$5.44 (5c)

	Imprint Areas:	Master Pack / Dimensions / Weight:	Item Dimensions:
#481:	3" W (8.5" Wrap) x 4" H	48 pcs./23" x 12" x 18"/22 lbs.	11 1/8" H x 2 7/8" Diameter
#481-S & #481-S-4CP:	8.25" W x 5.75" H	40 pcs./23" x 12" x 18"/22 lbs.	11 1/8" H x 3 1/8" Diameter
#481-04:	3" W (8.5" Wrap) x 4" H	48 ct./24" x 18" x 9"/18 lbs.	8 1/2" H x 2 7/8" Diameter
#481-04S & #481-04S-4CP:	8.25" Wrap x 3.5" H	40 ct./22" x 16" x 12"/17 lbs.	8 1/2" H x 3 1/8" Diameter

Prices include a one-color imprint on one side or full-wrap on sleeve only. Additional imprint colors add \$0.30 (g) per color. Screen charge \$45.00 (g) per color.

4-CP Prices include a four-color process sublimation imprint on sleeve only. Setup \$45.00 (g). Item proof \$45.00 (g) + piece price + shipping.



Country Canister Jars

Glass with Push-On Sealed Lid

		72	144	288	576	1008
9655-0101	#655-01 8 oz.	\$4.53	\$3.94	\$3.49	\$3.25	\$3.05
9655-0201	#655-02 16 oz.	\$4.87	\$4.23	\$3.78	\$3.50	\$3.28
9655-0301	#655-03 26 oz.	\$5.29	\$4.59	\$4.13	\$3.85	\$3.54 (5c)

Imprint Area:

#655-01: 4" W x 1.125" H

#655-02: 4" W x 2.25" H

#655-03: 4" W x 2.5" H

Master Pack / Dimensions / Weight:

#655-01: 36 ct./19" x 13" x 17"/29 lbs.

#655-02: 24 ct./19" x 13" x 17"/23 lbs.

#655-03: 24ct./19" x 13" x 17"/26 lbs.

Item Dimensions:

#655-01: 4 ½" H x 4" Diameter

#655-02: 5 ½" H x 4" Diameter

#655-03: 7" H x 4" Diameter

Prices include a one-color imprint on one or two sides. Additional imprint colors: add \$0.40 (g) each. Screen charge \$45.00 (g) per color. For multiple-color imprint, decal pricing will be required.

Wine Glasses

Glass

		72	144	288	576	1008
5 DAY 9671-0101	#671 8 oz.	\$3.64	\$3.16	\$2.81	\$2.50	\$2.35
5 DAY 9671-0101	#672 10 oz.	\$3.76	\$3.27	\$2.91	\$2.59	\$2.41 (5c)

Imprint Area:

#671: 2.5" W x 1.375" H

#672: 2" W x 1.5" H

Master Pack / Dimensions / Weight:

#671: 24 ct. / 19" x 13" x 17" / 10 lbs.

#672: 24 ct. / 24" x 18" x 12" / 13 lbs.

Item Dimensions:

#671: 6 ¾" H x 2 ¼" Diameter

#672: 7 ½" H x 2 ¼" Diameter

Prices include a one-color imprint on one or two sides. Additional imprint colors: add \$0.40 (g) each. Screen charge \$45.00 (g) per color. For multiple-color imprint, decal pricing will be required.



Pint Glass

16 oz. Glass

	96	288	576	1008	
9613-0101	#613	\$2.50	\$2.21	\$1.90	\$1.59 (4c)

Imprint Area: 3" W (8.5" Wrap) x 3" H

Master Pack / Dimensions / Weight: 24 ct. / 24" x 18" x 12" / 25 lbs.

Item Dimensions: 5 3/4" H x 3 1/2" Diameter

Prices include a one-color imprint on one or two sides. Additional imprint colors: add \$0.40 (g) each. Screen charge \$45.00 (g) per color. For artwork requiring tight registration, decal pricing may be required (as determined by factory).



#613

Target: Craft Brewers

In recent years, small brew houses – micro-breweries and craft brewers – have been popping up all over the place. This is probably fueled by a much larger trend that covers a much larger range of business. The trend to have a smaller, more focused geographical influence. One that connects with clients and customers on a much more direct basis. In other words, fertile ground for advertising with tangible products.

Numo has worked with promotional products distributors on many craft brewer projects. Of course, our regular line of glass drinkware, like our Pint Glass shown above, is a natural fit for these businesses. Most craft brewers deliver their product in glass bottles or aluminum cans, which are covered – literally – by our can and bottle insulators.

We've also helped out on some custom insulator projects for containers ranging from growler bottles to fridge packs to mini kegs and more.

If you've got a micro-brewery or craft brewer in your neighborhood, give us a shout. We look forward to helping you out!





#500

Glass Shot

1 ½ oz. Glass

Clear, Transparent Cobalt, Opaque Black

		144	288	576	1008
5 DAY	9500-0101				
	#500-CL Clear	\$1.59	\$1.52	\$1.24	\$0.97
5 DAY	9500				
	#500 Black or Cobalt	\$3.68	\$3.29	\$3.08	\$2.83 (4c)

Imprint Area: 1.75" W x 1.5" H

Master Pack / Dimensions / Weight: 144 ct. / 18" x 13" x 14" / 30 lbs.

Item Dimensions: 2 ¼" H x 2" Diameter

Prices include a one-color imprint on one or two sides. Additional imprint colors: add \$0.40 (g) each. Screen charge \$45.00 (g) per color. For artwork requiring tight registration, decal pricing may be required (as determined by factory).



#552

Ceramic Shot

1 ½ oz. Ceramic

White, Cobalt Blue, Black

		144	288	576	1008
5 DAY	9552-0121				
	#552-WH White	\$1.63	\$1.54	\$1.43	\$1.21
5 DAY	9552				
	#552 Black or Cobalt	\$1.75	\$1.56	\$1.33	\$1.23 (4c)

Imprint Area: 1.75" W x 1.5" H

Master Pack / Dimensions / Weight: 144 ct. / 18" x 13" x 14" / 30 lbs.

Item Dimensions: 2 ½" H x 2" Diameter

Prices include a one-color imprint on one or two sides. Additional imprint colors: add \$0.40 (g) each. Screen charge \$45.00 (g) per color. For artwork requiring tight registration, decal pricing may be required (as determined by factory).

Boot Shot

1 ½ oz. Glass

		144	288	576	1008
9570	#570	\$4.74	\$4.14	\$3.87	\$3.64 (4c)

Imprint Area: 1.75" W x 1.5" H

Master Pack / Dimensions / Weight: 72 ct. / 20" x 15" x 15" / 28 lbs.

Item Dimensions: 3" W x 3" H x 1 ½" Diameter

Prices include a one-color decal imprint on one side. For second side decal (available on #527 only), add \$0.55 (g). Additional colors add \$0.40 (g) per color per side. Screen Charge \$65.00 (g) per color per side.



Glass Shooters

Glass

		144	288	576	1008
5 9565-0101	#565 2 ½ oz.	\$2.07	\$1.80	\$1.72	\$1.51
5 9998-0101	#598 6 ¾ oz. Jumbo	\$4.30	\$3.83	\$3.58	\$3.42 (4c)

Imprint Area:

#565: 1.5" W x 2" H

#598: 2.25" W x 3" H

Master Pack / Dimensions / Weight:

#565: 144 ct. / 19" x 13" x 14" / 40 lbs.

#598: 48 ct. / 19" x 13" x 17" / 30 lbs.

Item Dimensions:

#565: 4" H x 1 ½" Diameter

#598: 7 ½" H x 1 ¾" Diameter

Prices include a one-color imprint on one or two sides. Additional imprint colors: add \$0.40 (g) each. Screen charge \$45.00 (g) per color. For artwork requiring tight registration, decal pricing may be required (as determined by factory).

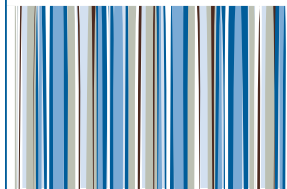
#598



#565

PREMIUM STOCK BACKGROUNDS

Free on any Four-Color Process Item!



P.K. Reese™
Silver Lake™
Suffix: -PKSL



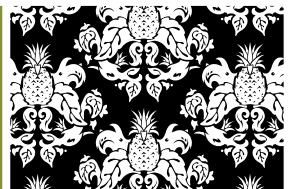
P.K. Reese™
Outer Banks™
Suffix: -PKOB



P.K. Reese™
Aruba™
Suffix: -PKAR



P.K. Reese™
Tucson™
Suffix: -PKTN



P.K. Reese™
Pineapple Damask
Suffix: -PKDA



P.K. Reese™
Hawaiian Blue
Suffix: -PKHB



P.K. Reese™
Hawaiian Red
Suffix: -PKHR



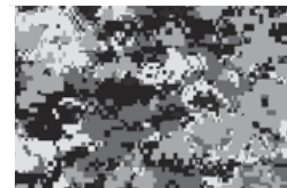
P.K. Reese™
Blue Medley
Suffix: -PKBM



DigiColor Camo™
Dark Blue
Suffix: -DCDB



DigiColor Camo™
Dark Green
Suffix: -DCDG



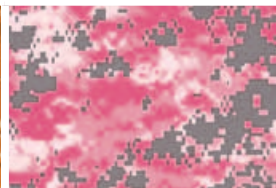
DigiColor Camo™
Gray
Suffix: -DCGY



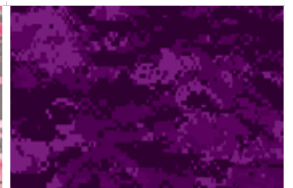
DigiColor Camo™
Lime Green
Suffix: -DCLG



DigiColor Camo™
Orange
Suffix: -DCOR



DigiColor Camo™
Pink & Gray
Suffix: -DCPG



DigiColor Camo™
Dark Purple
Suffix: -DCDP



DigiColor Camo™
Light Purple
Suffix: -DCLP



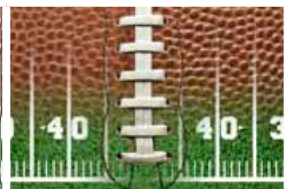
DigiColor Camo™
Red
Suffix: -DCRD



DigiColor Camo™
Light Blue
Suffix: -DCLB



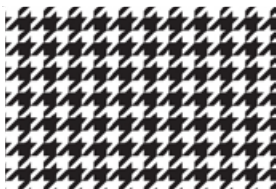
Diamond Plate
Suffix: -DPLT



Football Field
Suffix: -FBLF



Grass Turf
Suffix: -TURF



Houndstooth
Suffix: -HNTH



Bonz® Camo
Suffix: -BONZ



Next® Camo
Suffix: -NEXT

Numo Is **Lead-Free** on All Stock Ink Colors!

Lead-Free Inks for Scuba, Neoprene, and KKB Cooler Bags							
White							Black
2935C	287C	Reflex Blue	281C	Process Blue	2925C	320C	347C
Light Royal Blue	Dark Royal Blue	Reflex Blue	Navy Blue	Process Blue	Bright Blue	Aquamarine	Kelly Green
361C	802C	343C	468C	463C	814C	2685C	109 C
Lime Green	Neon Green	Forest Green	Khaki	Brown	Light Purple	Dark Purple	Lemon Yellow
116C	123C	1235 C	172C	806C	812C	235C	200C
Yellow	Athletic Gold	Golden Yellow	Orange	Neon Pink	Fluorescent Pink	Magenta	Bright Red
199C	185C	505C	429C	871 C	Shimmer Gold	877C	
Red Pagoda	Red	Burgundy	Gray	871 Metallic Gold	Shimmer gold	Metallic Silver	

Lead-Free Inks for Ceramics & Glassware					
White					Black
2577C	1797C	185C	186C	188C	172C
Purple	Red Pagoda	Red	Dark Red	Deep Ruby	Orange
483C	476C	101C	116C	7461C	355C
Chocolate Brown	Stock Brown	Light Yellow	Sunlight	Turquoise	Grass Green
357C	2728C	648C	322C	3015C	Satin
Forest Green	Royal Blue	Navy	Green Blue	Spruce Blue	Satin Etch

Lead-Free Inks for Bank Bags & Kool Buddy™					
					875
Tan/Ivory					Gold
7485	186	200	209		
Mint Green	Bright Red	Red	Maroon	Black	White
478	172	107	123	348	343
Brown	Orange	Primrose Yellow	Yellow	Green	Dark Green
Process Blue	072	295	2685	233	877
Process Blue	Reflex Blue	Permanent Blue	Purple	Cerise Pink	Silver

Due to the differences in printing methods used in creating this catalog and the items we produce, we cannot show an exact match in our catalog. All colors shown and PMS numbers listed are approximations intended as a guide to present the available selection.

Scuba Foam Material Colors



EcoCoolie2.0™ Scuba Foam Material Colors

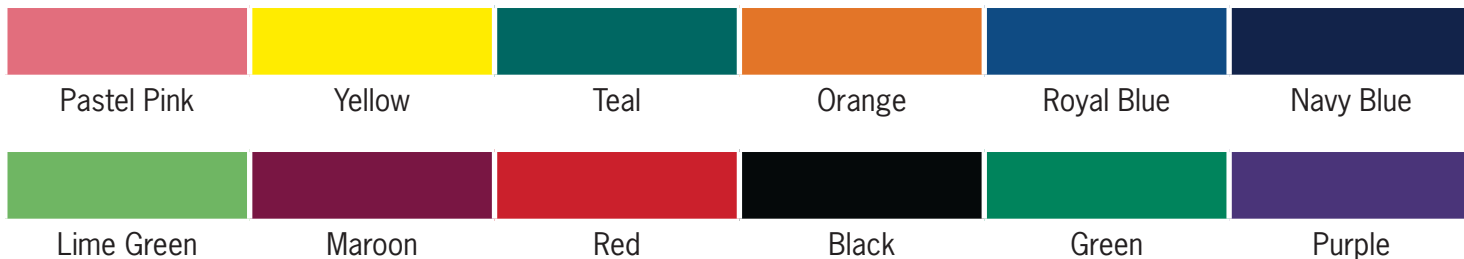


Premium Neoprene Material Colors



Due to the differences in printed inks compared to fabric dyes, we cannot show an exact match in our catalog. All colors shown are approximations intended as a guide to present the available selection.

Scuba Holder™ Foam Material Colors



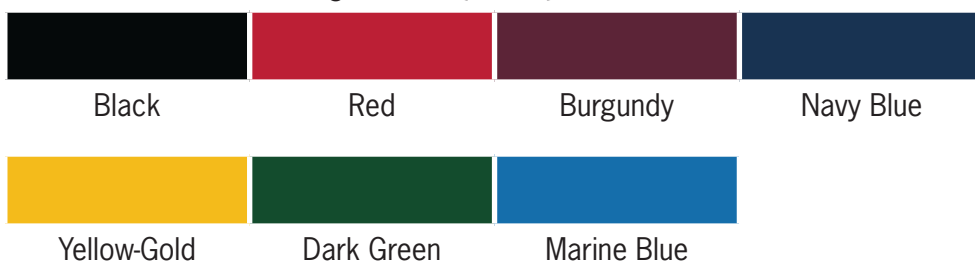
Pocket Hugger™ Foam Material Colors (also used on #480 SoftSide™ Mug)



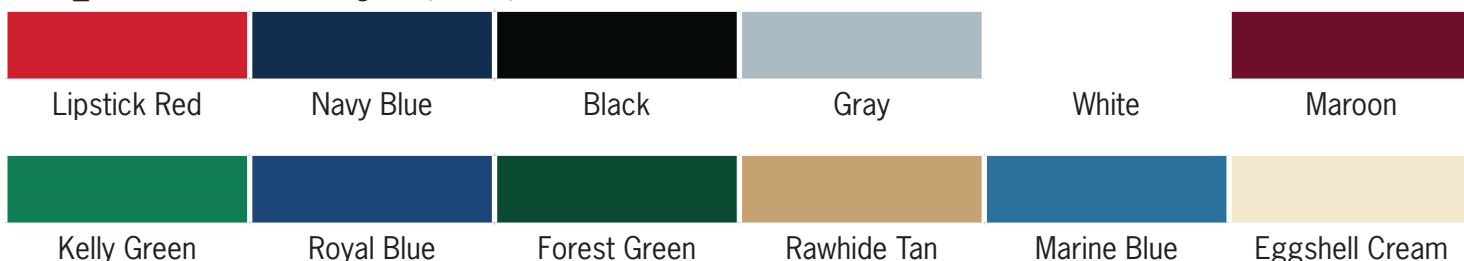
Kolder Holder™ Neoprene Material Colors



Laminated Nylon (LN) Material Colors



Expanded Vinyl (EV) Material Colors



Order Information

Decal Pricing Information:

If tight registration requires the use of a decal, there is an up charge to our normal pricing and requires additional lead time for your order. For spot color decal pricing, determine the price in the usual manner, then add the decal up charge.

	144	288	576	1008+
One Side Decal	\$0.75	\$0.70	\$0.65	\$0.60
Two Sides or Wrap	\$1.30	\$1.25	\$1.20	\$1.15 (4g)

Screen charges are \$65.00 (g) per color. Four color process decal pricing by quote; please contact factory.

Precious Metal Decorations, 22K Gold or Platinum Halos, and Imprints

22K non-microwaveable metallic gold or platinum is available and can be applied to most ceramic and glassware items. There is an additional cost for this type of decoration. They are not dishwasher safe and require careful hand washing for lasting durability. Microwave safe gold or platinum is available upon request.

Halos: Add \$0.40 (g) each.
Imprint: Add \$0.50 (g) per imprint side.

Personalization:

Available on all Numo 4CP items, we can make each item unique with a name drop or consecutive numbering. Add \$0.30 (g) per item, and pay the regular 4CP setup fee of \$45.00 (g). No additional setup fees are required. Call factory for more information.

Additional Pricing Information:

Free do-it-yourself instant online virtual proofs (powered by Technologo®) at www.numomfg.com!

Paper Or Digital Proof	\$10.00 (g) each
Changes To Proof	\$10.00 (g) each
Imprint Color Change	\$20.00 (g) per color
Copy Change	\$35.00 (g) per color
Pms Color Match*	\$25.00 (g) per color
Pre-Production Sample: Screenprint	\$45.00 (g) per color + item cost & freight
Pre-Production Sample: Four-Color Process (Required)	\$45.00 (g) per design
Spec Sample: Screenprint	\$45.00 (g) per color + item cost & freight
Spec Sample: Four-Color Process	\$45.00 per design
Split Shipments	\$10.00 (g) for each shipment after the first
Drop Shipments	\$10.00 (g) per destination
Palletizing	\$20.00 (g) per pallet
Wash-Up Charge	\$20.00 (g)
Less-Than-Minimum	\$50.00 (g)
Rush Service	Call factory prior to placing order.
Distributor Overruns	\$6.25 (g)
Export Papers	\$31.25 (g) per set

*Due to the chemical properties of inks used on ceramics and glassware, only a limited number of PMS colors can be accurately matched. Contact factory regarding specific colors you need to match prior to placing your order.

Setups:

Spot Color Screen Charge: \$45.00 (g) per color.
Four-Color Process Setup: \$45.00 (g) per item.
Screen Charges and Four-Color Process Setups are waived on exact repeat orders within two years.

Artwork

Numo adheres to the standard industry definition of reproducible art and reserves the right to accept or reject art depending upon the job.

*Artwork will be proportionally resized to fit maximum imprint area unless otherwise specified within the art file via crop marks or other notation.

Electronic art (spot color): Vector art is preferred for spot color printing. Numo recommends current versions of Adobe® Illustrator® or CorelDRAW®. File should be saved in EPS format and all type in each file should be converted to curves (paths, outlines). JPEG and TIFF files can be acceptable only if sent in high resolution.

Electronic art (4-color process): Numo requires Adobe® Illustrator® (.ai) or Photoshop® (.psd, .tif) files in high resolution or vector art. It is strongly recommended to send fully-layered documents in case any adjustments need to be made. If sending .ai files via email, please include an EPS or PDF version of each file to avoid file corruption.

Camera-ready art (spot color): An enlarged, clean black and white copy is recommended. Non-camera ready art will incur art charges.

Art Charges: \$60.00 (g) per hour.
Separations: \$18.75 (g) per color.
Returned copy of art: \$30.00 (g) per color.

Trademarks & Copyrights

Numo accepts orders for printing as being in full compliance with all applicable laws regarding its usage and assumes no liability for claims or infringements of trademarks, copyrights, patents, and/or personal rights. Products and logos shown in this catalog appear only to illustrate the basic products and the ability to imprint messages and art on them. There is no intention to suggest that the imprints were designed by Numo or that the products with these specific imprints are readily available to any purchaser without express written permission of the owners of any trademarked or copyrighted art, copy, or verbiage.

Shipping Information

FOB Texas. Carton dimensions listed in this catalog are for general guidelines; packing can vary based upon quantity.

Shipping Methods: Numo products are typically shipped by Motor Freight Carriers, UPS, Fed Ex, or USPS depending upon shipment weight and destination. Numo will route shipments the best way unless otherwise specified. Fully insured shipments must be clearly stated on order. Glassware and ceramics will incur a charge of \$5.00 (g) per carton for protective cartons when shipping via small package carriers (i.e. UPS, FedEx) to insure safe delivery. This charge will be incorporated in the final freight charges.

California Shipments: See "Proposition 65" information at right.

Inside Delivery: Motor freight carrier charges are for "tail-gate" delivery only. There is an additional charge for inside delivery and will be added to the invoice. This service must be requested in writing on the purchase order.

C.O.D Shipments: Not available.

Order Information

Shipping Information (cont'd)

Freight Claims: Title of goods passes to the buyer once goods leave Numo. All goods should be inspected for short-age and/or damage and duly noted by the consignee on the delivery receipt if evident at time of delivery. All claims must be filed with the carrier within 15 days of receipt of shipment. Numo will assist as much as possible in filing claims but will not be responsible for the payment of such claims.

Other Order Information

Acknowledgements: Order acknowledgements are typically emailed after order clarification to avoid misunderstandings and should be carefully examined with regard to all aspects of the order. All orders will be produced as acknowledged and no allowances will be made for failure to correct any discrepancies before production.

Cancellations: In the event an order is cancelled, a cancellation fee of \$37.50 (g) in addition to all charges associated with work already completed will be invoiced.

Returns or Adjustments: All claims must be made within 30 days of shipment. Return orders will not be accepted without factory approval and a return authorization (RA) number. No allowance will be made for outdated catalogs or incorrect pricing. Numo reserves the right to change prices without notice.

Terms: Prepayment or net 30 days with approved credit. Accounts unpaid after 30 days will incur a late charge of 1% per month on the unpaid balance. Numo accepts Mastercard, Visa, Discover, and American Express for your convenience. Returned checks: \$31.25 (g) per check per return (in addition to any charges from financial institutions).

Overage/Underage: All orders are subject to be shipped at 10% over/under the quantity ordered. Quantities shipped 10% under the ordered quantity will be considered fulfillment of the order. For exact quantity shipments (on catalog quantities only), there is a fee of \$35.00 (g), and prior arrangements must be made with factory.

California Proposition 65

Numo decorates glass and ceramic products using printing material that will comply with current U.S. Food & Drug Administration (FDA) Guidelines for heavy metal release standards, however California does not recognize the Federal standards and chooses to enforce its own standards.

The Safe Drinking Water and Toxic Enforcement Act of 1986, referred to as Proposition 65, requires that consumers be warned about products that may contain one of over 800 listed substances. Among these substances are lead and cadmium. Proposition 65 does not ban any product from being sold, it just requires a warning to the consumer.

A warning label is all that is required to comply and exact warning language must be used.

Numo offers decorating enamels that comply with Proposition 65 that do not require warning labels:

We offer ceramic enamels that can be used for glass and ceramics with either direct screen printing or decal application. Some colors are not available, please contact factory. We offer organic based colors for one color imprints. We offer four color process sublimation on ceramic mugs.

Numo continues to offer low lead, and no lead high gloss enamels for those customers who require them. We will apply warning labels for all glass or ceramic products destined for California that require these traditional enamels at no additional cost.

It is the distributor's responsibility to notify Numo in advance of shipments that are going to or may end up in the state of California. By the way of this statement, the distributor and the end customer holds Numo harmless from all liability for alleged Proposition 65 violations, including all costs associated with defending any legal claims due to Proposition 65 violations.

CPSIA

In 2008 the Consumer Product Safety Commission passed the Consumer Product Safety Improvement Act of 2008 (CPSIA). CPSIA places tighter regulations on lead content contained in products intended for or marketed towards children under the age of 12. Children's products can be considered any products with packaging, promotions or advertising that displays the product as appropriate for children 12 and younger. Numo offers two products (youth promo bands and Frisbees) that could be intended for use by Children under the age of 12. It is mandatory that these items be marked with the proper tracking information at the factory. All other products offered for sale are intended for adult business marketing purposes. If a distributor or end user plans to distribute or market one of these adult products to Children under the age of 12, we are fully capable of meeting the lead content requirements and adding the proper tracking information to the product, but must be informed by the purchaser at the time of the order.

It is the distributor's responsibility to notify Numo in advance of shipments that are marketed or intended for use by children under the age of 12. By the way of this statement, the distributor and the end customer holds Numo harmless from all liability for alleged CPSIA violations, including all costs associated with defending any legal claims due to CPSIA violations.



5-Day Quick-Ship Program

One color imprint on 1000 pieces or less on select items will ship in 5 full business days after art approval (with approved credit or advance payment). 5-Day Quick-Ship must be specified on the order. Order and art must be received prior to 1:00pm Central Time to count as a business day. No product proofs or paper proofs on quick ship orders.

Responsible Business Practices

Fair Labor: Kolder, Inc. DBA Numo, is proud to be a member of the Fair Labor Association. To find out more about the FLA, please visit www.fairlabor.org.

Product Testing: Results of independent laboratory tests of Numo materials and items can be found on our web site at www.numomfg.com.

Protecting our Environment: Numo is continually updating our physical facilities with energy-efficient improvements, as well as the continual implementation of our internal recycling program.

This catalog was printed using soy-based ink on recycled paper. Please recycle this catalog when you receive our 2012 catalog!

This isn't all!

MORE PRODUCTS
ON OUR WEBSITE:

www.numomfg.com

