

Test Report

Customer: Rutland Plastic Technologies Inc.
10021 Rodney Street
28134 Pineville - North Carolina
United States

Contact Person: Mr. Tony Chapman
Customer Reference: PADE

Report No.: (25418)067-386002

Report Version: 1
Date of Reception: 26.02.2018
Report Date: 08.03.2018

Date of Order: 22.02.2018
Sampled By: client

Sample Information

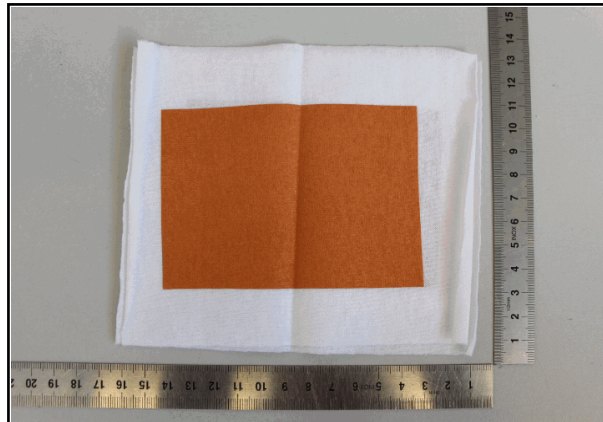
Testing Requirements: Tested according to "ordered" requirements
Sample Description: EF MAXOPAKE SERIES; Mixture Wet Plastisol Ink

Performance Date: 26.02.2018 - 08.03.2018

No. of workdays: 8

Submitted Samples

Nr. 1



Summary of Test Results
Tested according to "ordered" requirements

Tests required	Conclusion	Remark
Heavy metals, total content	Pass	
Heavy metals in surface coatings, total content	Pass	
Phthalates (CPSIA)	Pass	
Phthalates	Pass	

Please note that we dried the sample at 160°C for 1 minute.

Tested Samples

Article No	Sample ID	Sample description
	386002-01	1) Print orange on fabric white

Test Results


Tested according to "ordered" requirements

Sample Description:		1) Print orange on fabric white		Lab Reference No:	386002-01
Test Method / Standard:		Phthalates: DIN EN ISO 14389 (modified), extraction with THF/ACN followed by GC-MS and/or LC-MS analysis, reporting limit: 50 mg/kg			
Test Location:		Parameter has been analyzed at BVCPS laboratory Schwerin.			
Parameter	Limit	Result	Rating		
Di-iso-nonylphthalate (DINP)		130 mg/kg	No Specification		
Phthalates	≤ 1000 mg/kg	130 mg/kg	Pass		
Test Method / Standard:		Phthalates (CPSIA): CPSC-CH-C1001-09.3 (modified) - (CPSIA), reporting limit: 50 mg/kg			
Test Location:		Parameter has been analyzed at BVCPS laboratory Schwerin.			
Parameter	Limit	Result	Rating		
Di(2-ethylhexyl)phthalates (DEHP)	≤ 1000 mg/kg	<50 mg/kg	Pass		
Dibutylphthalates (DBP)	≤ 1000 mg/kg	<50 mg/kg	Pass		
Benzylbutylphthalate (BBP)	≤ 1000 mg/kg	<50 mg/kg	Pass		
Di-iso-nonylphthalates (DINP)	≤ 1000 mg/kg	170 mg/kg	Pass		
Di-iso-decylphthalates (DIDP)	≤ 1000 mg/kg	<50 mg/kg	Pass		
Di-n-octylphthalates (DNOP)	≤ 1000 mg/kg	<50 mg/kg	Pass		
Di-n-hexylphthalate (DnHP)	≤ 1000 mg/kg	<50 mg/kg	Pass		
1,2-Benzenedicarboxylic acid, dipentylester, branched and linear (Di-n-pentylphthalate, DnPP)	≤ 1000 mg/kg	<50 mg/kg	Pass		
Dicyclohexylphthalate (DCHP)	≤ 1000 mg/kg	<50 mg/kg	Pass		
Test Method / Standard:		Heavy metals, total content: Microwave digestion with salpetric acid/hydrochloric acid followed by ICP analysis			
Test Location:		Parameter has been analyzed at BVCPS laboratory Schwerin.			
Parameter	Limit	Result	Rating		
Arsenic (As)	≤ 100 mg/kg	<1 mg/kg	Pass		
Cadmium (Cd)	≤ 75 mg/kg	<1 mg/kg	Pass		
Lead (Pb)	≤ 90 mg/kg	<1 mg/kg	Pass		
Mercury (Hg)	≤ 0.5 mg/kg	<0.1 mg/kg	Pass		
Tin (Sn)		0.577 mg/kg	No Specification		
Test Method / Standard:		Heavy metals in surface coatings, total content: CPSC-CH-E-1003-9 modified, CPSD-AN-00001-MTHD			
Test Location:		Parameter has been analyzed at BVCPS laboratory Schwerin.			
Parameter	Limit	Result	Rating		
Arsenic (As)	≤ 100 mg/kg	<1 mg/kg	Pass		
Cadmium (Cd)	≤ 75 mg/kg	<1 mg/kg	Pass		
Lead (Pb)	≤ 90 mg/kg	<1 mg/kg	Pass		
Mercury (Hg)	≤ 0.5 mg/kg	<0.1 mg/kg	Pass		
Tin (Sn)		0.577 mg/kg	No Specification		

All services provided by Bureau Veritas Consumer Products Services Germany GmbH are subject to our current Terms and Conditions .
The test result relates only to the tested item. Without the written consent of Bureau Veritas Consumer Products Services Germany GmbH excerpts of this report shall not be reproduced. Tests not covered by the laboratory's testing spectrum may be subcontracted to an accredited laboratory. The accreditation relates to competences stated on the accreditation certificate. If nothing else has been agreed on samples are stored for 3 months. All tested parameters are listed in the appendix.

The testing of mixed samples is carried out at the customer's explicit request and may imply a deviation from the testing standard. Please note the following: results for mixed samples that are below the limit may exceed the limit if the samples contained in the mixed sample are tested individually. In these cases separate testing of the samples is recommended.

Performance Date: 26.02.2018 - 08.03.2018



Total Run Time: 8

Ute Freyemann
Analytical Testing Specialist

No results printed beyond this point in the report

Detailed Method Descriptions

Analysis / Test:	Heavy metals in surface coatings, total content
CPSC-CH-E-1001-8.1 modified, CPSC-CH-E-1002-8.1 modified, CPSC-AN-00066-MTHD, CPSC-AN-00164-MTHD	
Analysis / Test:	Phthalates (CPSIA)
CPSIA Sec.108, 101 (a)(2), test method: CPSC-CH-C1001-09.3 (modified) - (CPSIA), GC-MS analysis; reporting limit: 50 mg/kg.	

Parameters & CAS No.

Heavy metals, total content	(CAS No.)
Lead (Pb) (7439-92-1)	
Mercury (Hg) (7439-97-6)	
Tin (Sn) (7440-31-5)	
Arsenic (As) (7440-38-2)	
Cadmium (Cd) (7440-43-9)	
Heavy metals in surface coatings, total content	(CAS No.)
Lead (Pb) (7439-92-1)	
Mercury (Hg) (7439-97-6)	
Tin (Sn) (7440-31-5)	
Arsenic (As) (7440-38-2)	
Cadmium (Cd) (7440-43-9)	
Phthalates (CPSIA)	(CAS No.)
Di(2-ethylhexyl)phthalates (DEHP) (117-81-7)	
Di-n-octylphthalates (DNOP) (117-84-0)	
1,2-Benzenedicarboxylic acid, dipentylester, branched and linear (Di-n-pentylphthalate, DnPP) (131-18-0)	
Di-iso-decylphthalates (DIDP) (26761-40-0)	
Di-iso-nonylphthalates (DINP) (28553-12-0)	
Dicyclohexylphthalate (DCHP) (84-61-7)	
Dibutylphthalates (DBP) (84-74-2)	
Di-n-hexylphthalate (DnHP) (84-75-3)	
Benzylbutylphthalate (BBP) (85-68-7)	
Phthalates	(CAS No.)
Di(2-ethylhexyl)phthalate (DEHP) (117-81-7)	
Bis(2-methoxyethyl) phthalate (DMEP) (117-82-8)	
Di-n-octylphthalate (DNOP) (117-84-0)	
Di-iso-decylphthalate (DIDP) (26761-40-0)	
Di-iso-nonylphthalate (DINP) (28553-12-0)	
1,2-Benzenedicarboxylic acid, di-C7-11-branched and linear alkyl esters (DHNUP) -> determined as Diundecylphthalate (68515-42-4, 3648-20-2)	
1,2-Benzenedicarboxylic acid, di-C6-8-branched alkyl esters, C7-rich (DIHP) (71888-89-6)	
Di-iso-butylphthalate (DIBP) (84-69-5)	
Dibutylphthalate (DBP) (84-74-2)	
Di-n-hexyl phthalate (DnHP) (84-75-3)	
Benzylbutylphthalate (BBP) (85-68-7)	